

INSERTS FOR EUROMAC MULTITOOLS

PASS TOOLS FOR YOUR EUROMAC MULTITOOL SYSTEM

INDEX

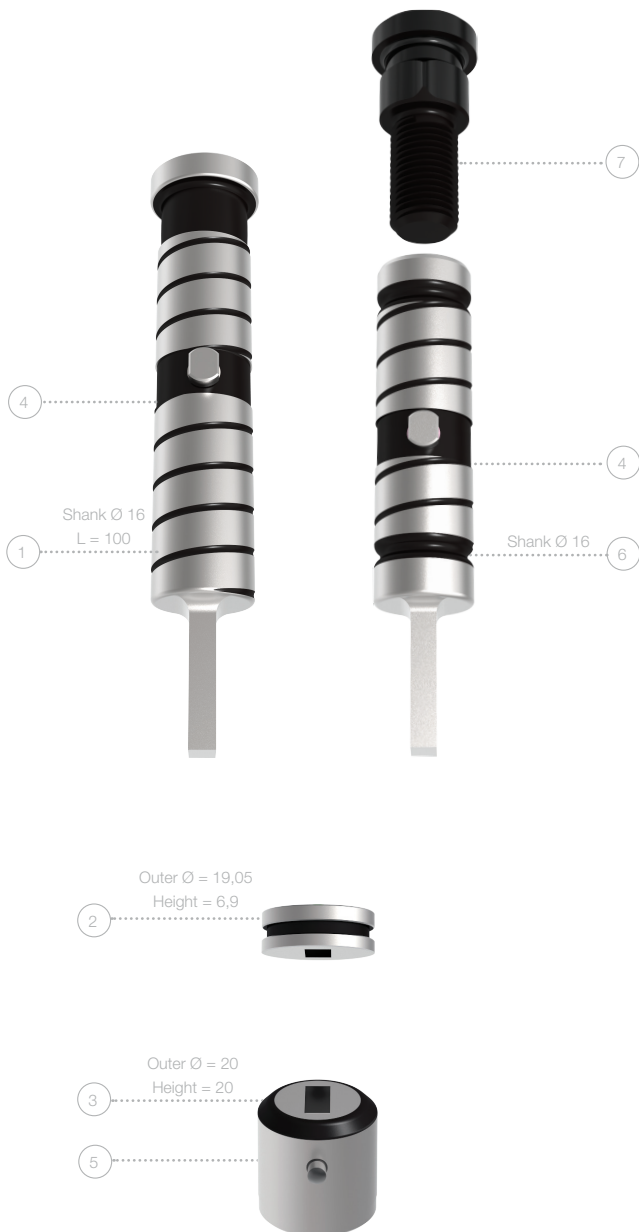
XMTE10-12,7	page 6
XMTE6-24; XMTE10-24	page 7
XMTE4-31,75	page 8
MTE10-8 (Pos. 2/3/4/5/6/8/10)	page 9
MTE6-24; MTE10-24 (Pos. 1/7/9)	page 10
MTE4-31,75	page 11

EUROMAC

XMTE10-12,7

PUNCH
RIGID

PUNCH
ADJUSTABLE



	POS.-NO.	PART-NO.
PUNCH - RIGID (1) (H-PM®)		
Round	1	413101
Square	1+4	413102
Rectangle	1+4	413103
Oblong	1+4	413104
O.D. Ground Special Shape	1+4	41310G
EDM Required Special Shape	1+4	41310E

	POS.-NO.	PART-NO.
PUNCH - ADJUSTABLE (2)* (H-PM®)		
Punch head	7	1999X1791
Round	6+4	413101-A
Square	6+4	413102-A
Rectangle	6+4	413103-A
Oblong	6+4	413104-A
O.D. Ground Special Shape	6+4	41310G-A
EDM Required Special Shape	6+4	41310E-A

	POS.-NO.	PART-NO.
STRIPPER		
Round	2	415101
Square	2	415102
Rectangle	2	415103
Oblong	2	415104
O.D. Ground Special Shape	2	41510G
EDM Required Special Shape	2	41510E

	POS.-NO.	PART-NO.
DIE (HWS)		
Round	3	414101
Square	3+5	414102
Rectangle	3+5	414103
Oblong	3+5	414104
O.D. Ground Special Shape	3+5	41410G
EDM Required Special Shape	3+5	41410E

*not for distribution in Germany, Italy, Turkey, China and the USA

ADDITIONAL COSTS FOR PUNCHES

- TICN coating
- T-MAX coating
- A-MAX coating
- WT-shear
- DOWT-shear
- 2 PT-shear
- 4 PT-shear
- Cutting part under 1,00 mm

ADDITIONAL COSTS FOR DIES

- Reinforced version
- H-PM® Quality
- Additional pin hole

EUROMAC

XMTE6-24; XMTE10-24

PUNCH
RIGID

PUNCH
ADJUSTABLE

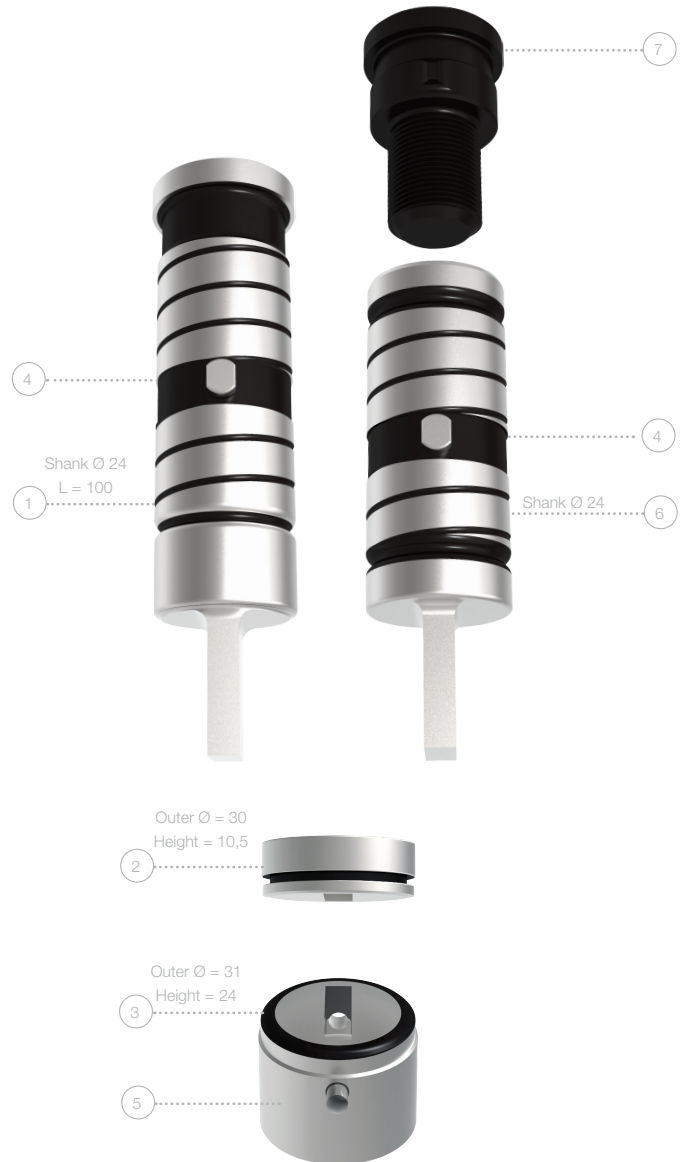
	POS.-NO.	PART-NO.
PUNCH - RIGID (1) (H-PM®)		
Round	1	413041
Square	1+4	413042
Rectangle	1+4	413043
Oblong	1+4	413044
O.D. Ground Special Shape	1+4	41304G
EDM Required Special Shape	1+4	41304E

	POS.-NO.	PART-NO.
PUNCH - ADJUSTABLE (2)* (H-PM®)		
Punch head	7	1999X1691
Round	6+4	413041-A
Square	6+4	413042-A
Rectangle	6+4	413043-A
Oblong	6+4	413044-A
O.D. Ground Special Shape	6+4	41304G-A
EDM Required Special Shape	6+4	41304E-A

	POS.-NO.	PART-NO.
STRIPPER		
Round	2	415041
Square	2	415042
Rectangle	2	415043
Oblong	2	415044
O.D. Ground Special Shape	2	41504G
EDM Required Special Shape	2	41504E

	POS.-NO.	PART-NO.
DIE (HWS)		
Round	3	414041
Square	3+5	414042
Rectangle	3+5	414043
Oblong	3+5	414044
O.D. Ground Special Shape	3+5	41404G
EDM Required Special Shape	3+5	41404E

*not for distribution in Germany, Italy, Turkey, China and the USA



ADDITIONAL COSTS FOR PUNCHES

TICN coating
T-MAX coating
A-MAX coating
WT-shear
DOWT-shear
2 PT-shear
4 PT-shear
Cutting part under 1,00 mm

ADDITIONAL COSTS FOR DIES

Reinforced version
H-PM® Quality
Additional pin hole

EUROMAC

XMTE4-31,75



	POS.-NO.	PART-NO.
PUNCH (H-PM®)		
Round	1	413141
Square	1+4	413142
Rectangle	1+4	413143
Oblong	1+4	413144
O.D. Ground Special Shape	1+4	41314G
EDM Required Special Shape	1+4	41314E
STRIPPER		
Round	2	415141
Square	2	415142
Rectangle	2	415143
Oblong	2	415144
O.D. Ground Special Shape	2	41514G
EDM Required Special Shape	2	41514E
DIE (HWS)		
Round	3	414141
Square	3+5	414142
Rectangle	3+5	414143
Oblong	3+5	414144
O.D. Ground Special Shape	3+5	41414G
EDM Required Special Shape	3+5	41414E

ADDITIONAL COSTS FOR PUNCHES

- TICN coating
- T-MAX coating
- A-MAX coating
- WT-shear
- DOWT-shear
- 2 PT-shear
- 4 PT-shear
- Cutting part under 1,00 mm

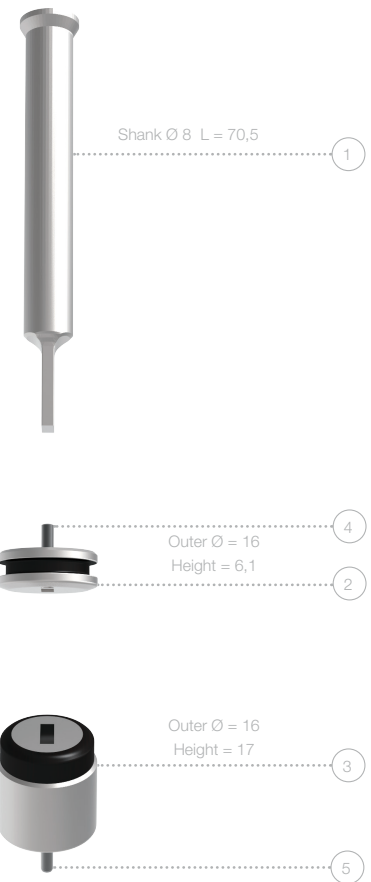
ADDITIONAL COSTS FOR DIE

- Reinforced version
- H-PM® Quality
- Additional pin hole

EUROMAC

MTE10-8 (POS. 2/3/4/5/6/8/10)

	POS.-NO.	PART-NO.
PUNCH (H-PM®)		
Round	1	413011
Square	1	413012
Rectangle	1	413013
Oblong	1	413014
O.D. Ground Special Shape	1	41301G
EDM Required Special Shape	1	41301E
STRIPPER		
Round	2	415011
Square	2+4	415012
Rectangle	2+4	415013
Oblong	2+4	415014
O.D. Ground Special Shape	2+4	41501G
EDM Required Special Shape	2+4	41501E
DIE (HWS)		
Round	3	414011
Square	3+5	414012
Rectangle	3+5	414013
Oblong	3+5	414014
O.D. Ground Special Shape	3+5	41401G
EDM Required Special Shape	3+5	41401E



ADDITIONAL COSTS FOR PUNCHES

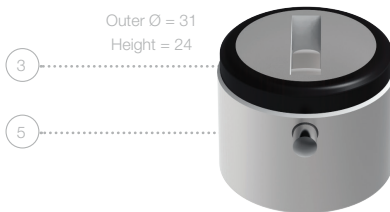
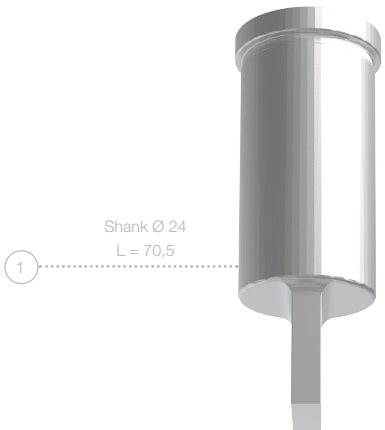
TICN coating
T-MAX coating
A-MAX coating
WT-shear
DOWT-shear
2 PT-shear
4 PT-shear
Cutting part under 1,00 mm

ADDITIONAL COSTS FOR DIES

Reinforced version
H-PM® Quality
Additional pin hole

EUROMAC

MTE6-24; MTE10-24 (POS. 1/7/9)



	POS.-NO.	PART-NO.
PUNCH (H-PM®)		
Round	1	413031
Square	1	413032
Rectangle	1	413033
Oblong	1	413034
O.D. Ground Special Shape	1	41303G
EDM Required Special Shape	1	41303E

STRIPPER		
Round	2	415031
Square	2+4	415032
Rectangle	2+4	415033
Oblong	2+4	415034
O.D. Ground Special Shape	2+4	41503G
EDM Required Special Shape	2+4	41503E

DIE (HWS)		
Round	3	414031
Square	3+5	414032
Rectangle	3+5	414033
Oblong	3+5	414034
O.D. Ground Special Shape	3+5	41403G
EDM Required Special Shape	3+5	41403E

ADDITIONAL COSTS FOR PUNCHES

TICN coating
 T-MAX coating
 A-MAX coating
 WT-shear
 DOWT-shear
 2 PT-shear
 4 PT-shear
 Cutting part under 1,00 mm

ADDITIONAL COSTS FOR DIES

Reinforced version
 H-PM® Quality
 Additional pin hole

	POS.-NO.	PART-NO.
PUNCH (H-PM®)		
Round	1	413061
Square	1+4	413062
Rectangle	1+4	413063
Oblong	1+4	413064
O.D. Ground Special Shape	1+4	41306G
EDM Required Special Shape	1+4	41306E
STRIPPER		
Round	2	415061
Square	2	415062
Rectangle	2	415063
Oblong	2	415064
O.D. Ground Special Shape	2	41506G
EDM Required Special Shape	2	41506E
DIE (HWS)		
Round	3	414061
Square	3+5	414062
Rectangle	3+5	414063
Oblong	3+5	414064
O.D. Ground Special Shape	3+5	41406G
EDM Required Special Shape	3+5	41406E



ADDITIONAL COSTS FOR PUNCHES

TICN coating
 T-MAX coating
 A-MAX coating
 WT-shear
 DOWT-shear
 2 PT-shear
 4 PT-shear
 Cutting part under 1,00 mm

ADDITIONAL COSTS FOR DIES

Reinforced version
 H-PM® Quality
 Additional pin hole