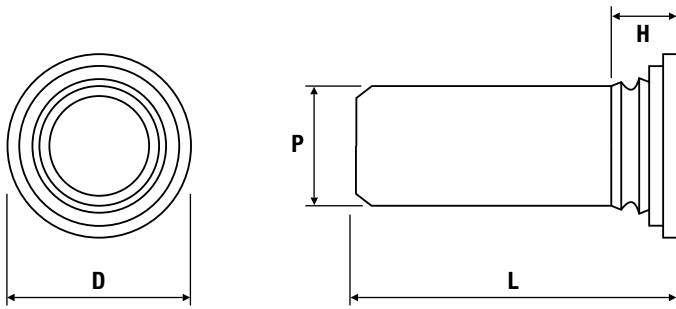


Flush Head Pin TR-TP/TR-TPS/TR-TP4



Metric Dimensions

Zinc Plated Steel: TR-TP | Stainless Steel: TR-TPS | 400 Series Stainless Steel: TR-TP4

P pin diameter ± 0.05	3	4	5	6
Min. sheet thickness	1.0			
Recommended hole size	3.5	4.5	5.5	6.5
D ± 0.4	5.20	6.12	7.19	8.13
H max.	2.29	2.29	2.29	2.29
Min. distance to edge of sheet	6.4	7.1	7.61	7.9

Length (L) ± 0.4	3	4	6	8	10	12	16	20

Metric Performance Data

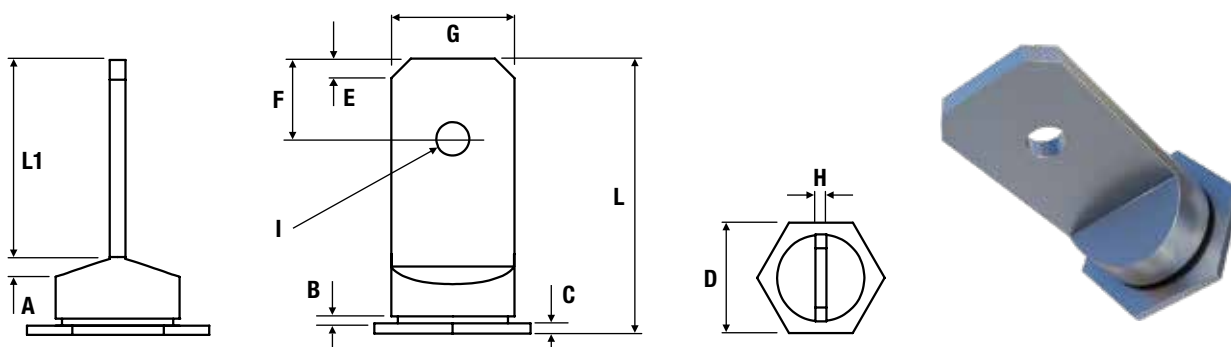
P pin diameter ± 0.05	3	4	5	6
Test sheet material	Steel			
Installation (kN)	23	27	35	40
Push-out (kN)	1	1.6	1.8	2.2

TR-TP - Recommended for use in sheet hardness: HRB 80 or less
 TR-TPS - Recommended for use in sheet hardness: HRB 70 or less

TR-TP4 - Recommended for use in sheet hardness: HRB 92 or less



Terminal Pin TR-TER



Metric Dimensions

Electro Tin Plated Steel: TR-TER

Part number	TR-TER
A	1.05
B	0.36
C	0.52
D	8.00
E	1 x 45°
F	4.10
G	6.30
H	0.80
I	1.7 dia.
L	14.00
L1	9.00
Plate G x H	6.3 x 0.8
Recommended hole size ± 0.08	6.40
Min. distance to edge of sheet	7.30
Min. sheet thickness	0.80

TR-TER - Recommended for use in sheet hardness: HRB 80 or less

