

PASS SLITTING TOOL SIZE 2 / 5 X 30

INTEGRATED ADJUSTING RING, SLITTING PUNCH BLADE, DIE PLATE INSERT



DESCRIPTION	POSITION	PART-NO.
COMPLETE TOOL ⁽¹⁾		
Oblong	1 - 5	1S0433110
Rectangle	1 - 5	1S0433120
Rectangle with 4 x R = 0,5	1 - 5	1S0433130
Trapezoid SF17	1 - 5	1S0433140
Double Trapezoid SF16	1 - 5	1S0433150
SLITTING PUNCH BLADE ADAPTER (WITHOUT PUNCH BLADE INSERT)		
With integrated adjusting ring	1	1S0393
PUNCH PLATE INSERT (H-PM[®]) ⁽¹⁾		
Oblong	2	1S04331
Rectangle	2	1S04332
Rectangle with 4 x R = 0,5	2	1S04333
Trapezoid SF17	2	1S04334
Double Trapezoid SF16	2	1S04335
STRIPPER		
Oblong	3	119234
Rectangle	3	119233
Rectangle with 4 x R = 0,5	3	119233
Trapezoid SF17	3	119237
Double Trapezoid SF16	3	119236
DIE PLATE INSERT (H-PM[®])		
Oblong	4	1S17251
Rectangle ⁽²⁾	4	1S17252
Trapezoid SF17	4	1S17254
Double Trapezoid SF16	4	1S17255
DIE PLATE ADAPTER (WITHOUT DIE PLATE INSERT) ⁽³⁾		
Incl. screws	5	1S1730

Details / Additional costs:

UPPER PART

Max. sheet thickness up to 3,00 mm

⁽¹⁾ Additional costs for reduced dimensional deviation

⁽¹⁾ Standard version with rooftop

Set of spare screws M 8 x 16 (2 pc per set)

Part-no. 1S0393Z

Cross references:

see page

UPPER PART

Additional costs for coating (slitting punch blade insert)

54

Polished cutting part (punch size 2)

55

STRIPPER

PU coating for low-scratch material handling

STRIPPER

Spare parts

52

Push-out stripper

53

LOWER PART

Compensating rings:

1 Set (2xt = 0,1 mm / 2xt = 0,3 mm / 2xt = 0,5 mm) - part-no. 1S3794

⁽²⁾ Suitable for rectangle, as well as rectangle 4 x R = 0,5

⁽³⁾ Brush version for low-scratch material handling

LOWER PART

RTC cartridge and die carrier

41

Die clips

52

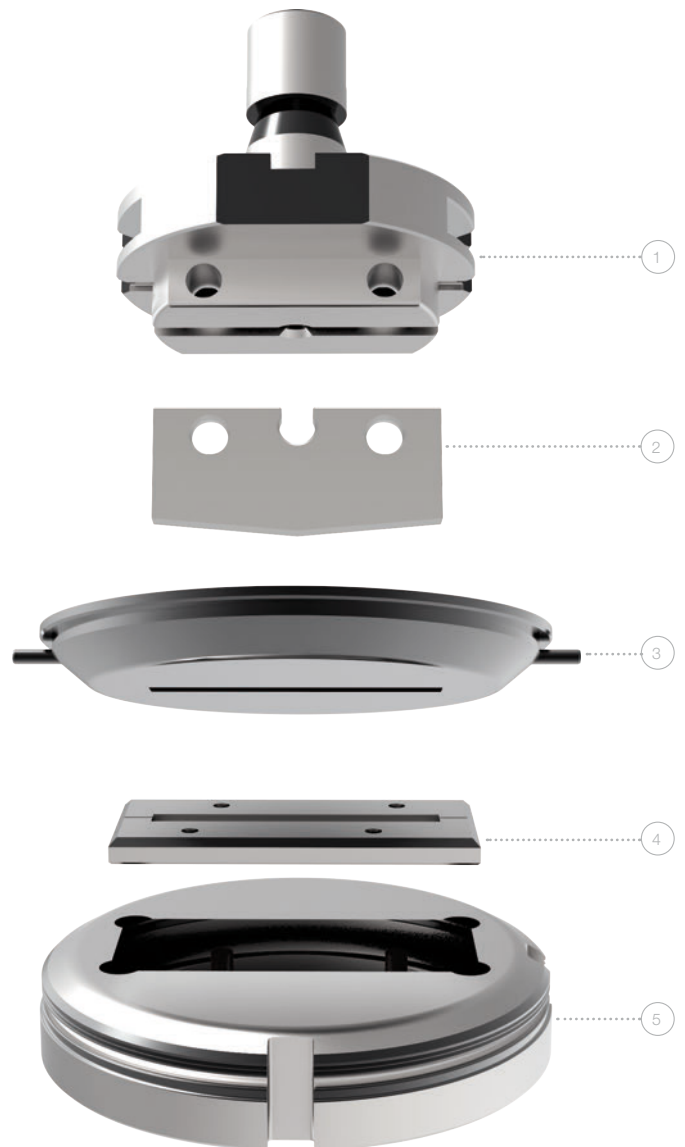
Slug-snap version for slug problems (die size 2)

57

PASS SLITTING TOOL SIZE 2 / 5 X 56

INTEGRATED ADJUSTING RING, SLITTING PUNCH BLADE, DIE PLATE INSERT

DESCRIPTION	POSITION	PART-NO.
COMPLETE TOOL ⁽¹⁾		
Oblong	1 - 5	1S0431110
Rectangle	1 - 5	1S0431120
Rectangle with 4 x R = 0,5	1 - 5	1S0431130
Trapezoid SF17	1 - 5	1S0431140
Double Trapezoid SF16	1 - 5	1S0431150
SLITTING PUNCH BLADE ADAPTER (WITHOUT PUNCH BLADE INSERT)		
With integrated adjusting ring	1	1S0393
PUNCH PLATE INSERT (H-PM[®]) ⁽¹⁾		
Oblong	2	1S04311
Rectangle	2	1S04312
Rectangle with 4 x R = 0,5	2	1S04313
Trapezoid SF17	2	1S04314
Double Trapezoid SF16	2	1S04315
STRIPPER		
Oblong	3	119254
Rectangle	3	119253
Rectangle with 4 x R = 0,5	3	119253
Trapezoid SF17	3	119257
Double Trapezoid SF16	3	119256
DIE PLATE INSERT (H-PM[®])		
Oblong	4	1S17261
Rectangle ⁽²⁾	4	1S17262
Trapezoid SF17	4	1S17264
Double Trapezoid SF16	4	1S17265
DIE PLATE ADAPTER (WITHOUT DIE PLATE INSERT) ⁽³⁾		
Incl. screws	5	1S1756



Details / Additional costs:

UPPER PART

Max. sheet thickness up to 3,00 mm

⁽¹⁾ Additional costs for reduced dimensional deviation

⁽¹⁾ Standard version with rooftop

Set of spare screws M 8 x 16 (2 pc per set)

Part-no. 1S0393Z

Cross references:

see page

UPPER PART

Slitting close to embossing

29 - 30

Additional costs for coating (slitting punch blade insert)

54

Polished cutting part (punch size 2)

55

STRIPPER

PU coating for low-scratch material handling

STRIPPER

Spare parts

52

Push-out stripper

53

LOWER PART

Compensating rings:

1 Set (2xt = 0,1 mm / 2xt = 0,3 mm / 2xt = 0,5 mm) - part-no. 1S3794

⁽²⁾ Suitable for rectangle, as well as rectangle 4 x R = 0,5

⁽³⁾ Brush version for low-scratch material handling

LOWER PART

RTC cartridge and die carrier

41

Die clips

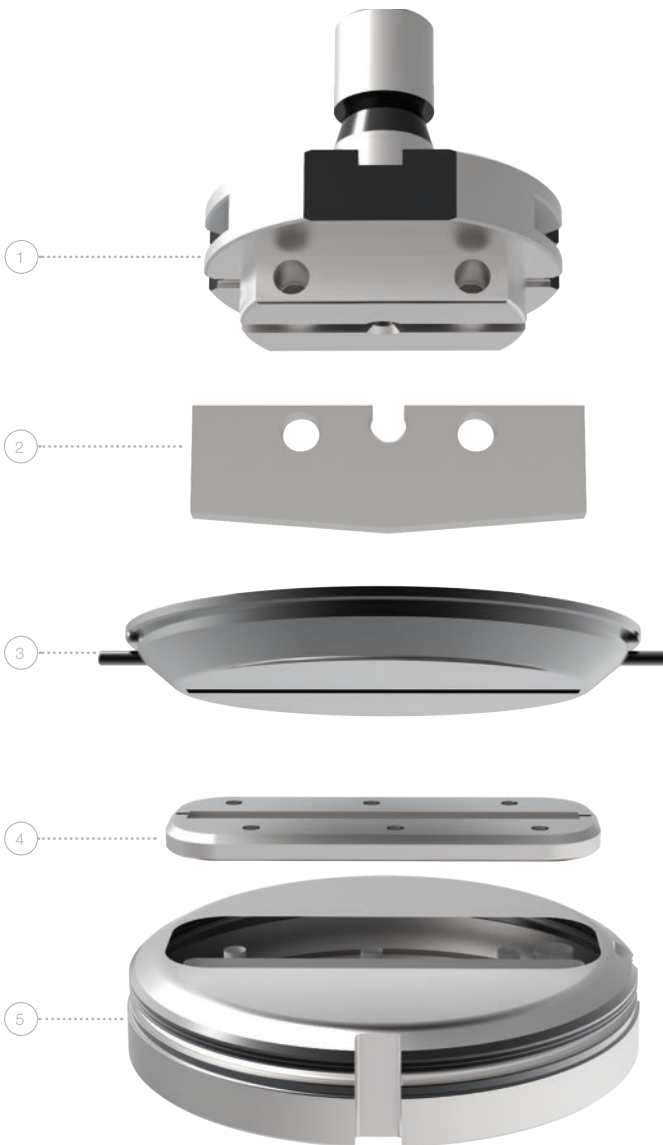
52

Slug-snap version for slug problems (die size 2)

57

PASS SLITTING TOOL SIZE 2 / 5 X 76,2

INTEGRATED ADJUSTING RING, SLITTING PUNCH BLADE, DIE PLATE INSERT



DESCRIPTION	POSITION	PART-NO.
COMPLETE TOOL ⁽¹⁾		
Oblong	1 - 5	1S0432110
Rectangle	1 - 5	1S0432120
Rectangle with 4 x R = 0,5	1 - 5	1S0432130
Trapezoid SF17	1 - 5	1S0432140
Double Trapezoid SF16	1 - 5	1S0432150
SLITTING PUNCH BLADE ADAPTER (WITHOUT PUNCH BLADE INSERT)		
With integrated adjusting ring	1	1S0393
PUNCH PLATE INSERT (H-PM[®]) ⁽¹⁾		
Oblong	2	1S04321
Rectangle	2	1S04322
Rectangle with 4 x R = 0,5	2	1S04323
Trapezoid SF17	2	1S04324
Double Trapezoid SF16	2	1S04325
STRIPPER		
Oblong	3	119274
Rectangle	3	119273
Rectangle with 4 x R = 0,5	3	119273
Trapezoid SF17	3	119277
Double Trapezoid SF16	3	119276
DIE PLATE INSERT (H-PM[®])		
Oblong	4	1S17411
Rectangle ⁽²⁾	4	1S17412
Trapezoid SF17	4	1S17414
Double Trapezoid SF16	4	1S17415
DIE PLATE ADAPTER (WITHOUT DIE PLATE INSERT) ⁽³⁾		
Incl. screws	5	1S1776

Details / Additional costs:

UPPER PART

Max. sheet thickness up to 2,50 mm

⁽¹⁾ Additional costs for reduced dimensional deviation

⁽¹⁾ Standard version with rooftop

Set of spare screws M 8 x 16 (2 pc per set)

Part-no. 1S0393Z

Cross references:

see page

UPPER PART

Slitting close to embossing

31

Additional costs for coating (slitting punch blade insert)

54

Polished cutting part (punch size 2)

55

STRIPPER

PU coating for low-scratch material handling

STRIPPER

Spare parts

52

Push-out stripper

53

LOWER PART

Compensating rings:

1 Set (2xt = 0,1 mm / 2xt = 0,3 mm / 2xt = 0,5 mm) - part-no. 1S3797

⁽²⁾ Suitable for rectangle, as well as rectangle 4 x R = 0,5

⁽³⁾ Brush version for low-scratch material handling

LOWER PART

RTC cartridge and die carrier

41

Die clips

52

Slug-snap version for slug problems (die size 2)

57

PASS SLITTING TOOL SIZE 2 / 5 X 56

INTEGRATED ADJUSTING RING, SLITTING PUNCH BLADE AND DIE PLATE INSERT FOR SLITTING CLOSE TO EMBOSSING UP TO H = 4,50 MM, WITH SPRING-LOADED METAL STRIPPER

DESCRIPTION	POSITION	PART-NO.
COMPLETE TOOL ^(*)		
Oblong	1 - 7	1S037110
Rectangle	1 - 7	1S037120
Rectangle with 4 x R = 0,5	1 - 7	1S037130
Trapezoid SF17	1 - 7	1S037140
Double Trapezoid SF16	1 - 7	1S037150
COMPLETE UPPER PART ^(*)		
Oblong	1 - 5	1S03711
Rectangle	1 - 5	1S03712
Rectangle with 4 x R = 0,5	1 - 5	1S03713
Trapezoid SF17	1 - 5	1S03714
Double Trapezoid SF16	1 - 5	1S03715
SPARE PARTS FOR UPPER PART		
Slitting punch blade adapter	1	1S0371
Set of spare springs and screws	3 + 4	1S0379
Active stripper	5	1S03752C
PUNCH PLATE INSERT (H-PM[®]) ^(*)		
Oblong	2	1S04311
Rectangle	2	1S04312
Rectangle with 4 x R = 0,5	2	1S04313
Trapezoid SF17	2	1S04314
Double Trapezoid SF16	2	1S04315
DIE PLATE INSERT (H-PM[®])		
Oblong	6	1S17261
Rectangle ^(*)	6	1S17262
Trapezoid SF17	6	1S17264
Double Trapezoid SF16	6	1S17265
DIE PLATE ADAPTER (WITHOUT DIE PLATE INSERT) ^(*)		
Incl. screws	7	1S1756



Details / Additional costs:

UPPER PART

Max. sheet thickness up to 1,50 mm

^(*) Additional costs for reduced dimensional deviation

^(*) Standard version with rooftop

Set of spare screws M 8 x 16 (2 pc per set)

Part-no. 1S0393Z

Cross references:

UPPER PART

Additional costs for coating (slitting punch blade insert)

Polished cutting part (punch size 2)

see page

54

55

STRIPPER

Polished version for low-scratch material handling

STRIPPER

LOWER PART

Compensating rings:

1 Set (2xt = 0,1 mm / 2xt = 0,3 mm / 2xt = 0,5 mm) - part-no. 1S3794

^(*) Suitable for rectangle, as well as rectangle 4 x R = 0,5

^(*) Brush version for low-scratch material handling

LOWER PART

RTC cartridge and die carrier

Die clips

Slug-snap version for slug problems (die size 2)

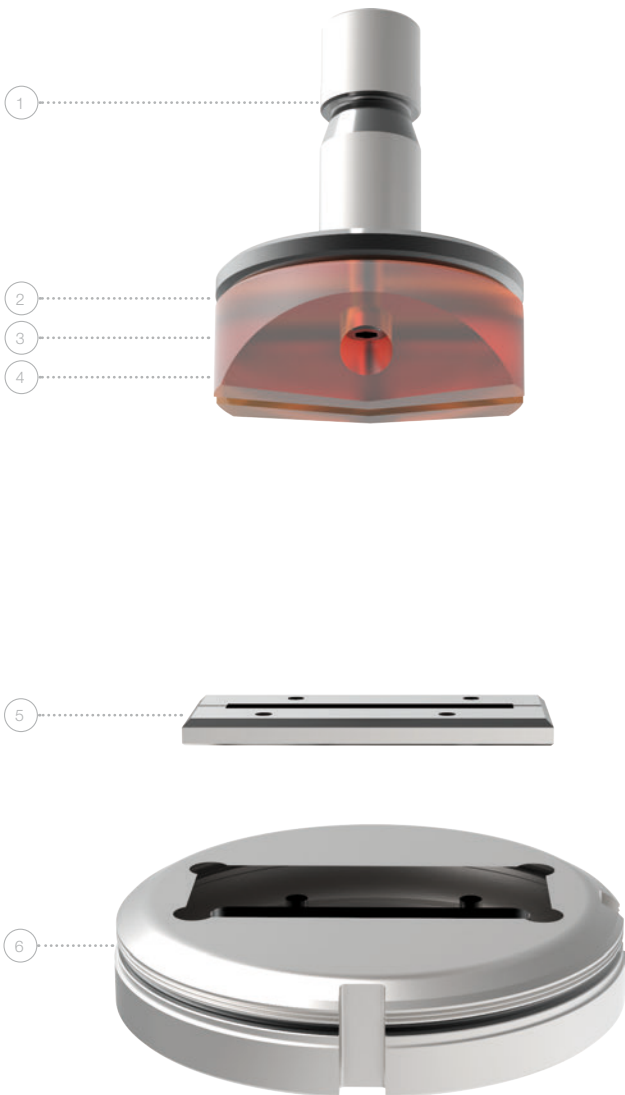
41

52

57

PASS SLITTING TOOL SIZE 2 / 5 X 56

FOR SLITTING CLOSE TO EMBOSSING, WITH PU STRIPPER



DESCRIPTION	POSITION	PART-NO.
COMPLETE TOOL ⁽¹⁾		
Oblong	1 - 6	1S295010
Rectangle	1 - 6	1S295020
Rectangle with 4 x R = 0,5	1 - 6	1S295030
Trapezoid SF17	1 - 6	1S295040
Double Trapezoid SF16	1 - 6	1S295050
COMPLETE UPPER PART (INCL. SPRINGS, SCREWS, SCREW-ADAPTER) ⁽¹⁾		
Oblong	1 - 4	1S29501
Rectangle	1 - 4	1S29502
Rectangle with 4 x R = 0,5	1 - 4	1S29503
Trapezoid SF17	1 - 4	1S29504
Double Trapezoid SF16	1 - 4	1S29505
PUNCH (WITHOUT SPRINGS, SCREWS, SCREW-ADAPTER) (H-PM[®]) ⁽¹⁾		
Oblong	1	1S29511
Rectangle	1	1S29512
Rectangle with 4 x R = 0,5	1	1S29513
Trapezoid SF17	1	1S29514
Double Trapezoid SF16	1	1S29515
DIE PLATE INSERT (H-PM[®])		
Oblong	5	1S17261
Rectangle ⁽²⁾	5	1S17262
Trapezoid SF17	5	1S17264
Double Trapezoid SF16	5	1S17265
DIE PLATE ADAPTER (WITHOUT DIE PLATE INSERT) ⁽³⁾		
Incl. screws	6	1S1756

Details / Additional costs:

UPPER PART

Max. sheet thickness up to 3,00 mm

⁽¹⁾ Additional costs for reduced dimensional deviation

⁽¹⁾ Standard version with rooftop

X3-PM quality -> see page 68

Cross references:

see page

UPPER PART

Adjusting rings

34

ps:®passfit - explanation and additional costs

40

Additional costs for coating (punch size 2)

54

Polished cutting part (punch size 2)

55

STRIPPER

Set of spare PU springs - part-no. 1S2956 - pos. 4

Set of spare screw-adapter - part-no. 1S2954 - pos. 3

Set of spare screws - part-no. 1S2950 - pos. 2

STRIPPER

LOWER PART

Compensating rings:

1 Set (2xt = 0,1 mm / 2xt = 0,3 mm / 2xt = 0,5 mm) - part-no. 1S3794

⁽²⁾ Suitable for rectangle, as well as rectangle 4 x R = 0,5

⁽³⁾ Brush version for low-scratch material handling

LOWER PART

RTC cartridge and die carrier

41

Die clips

52

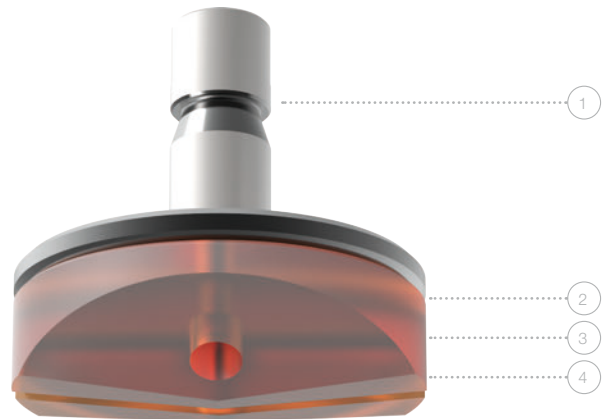
Slug-snap version for slug problems (die size 2)

57

PASS SLITTING TOOL SIZE 2 / 5 X 76,2

FOR SLITTING CLOSE TO EMBOSSING, WITH PU STRIPPER

DESCRIPTION	POSITION	PART-NO.
COMPLETE TOOL ⁽¹⁾		
Oblong	1 - 6	1S297010
Rectangle	1 - 6	1S297020
Rectangle with 4 x R = 0,5	1 - 6	1S297030
Trapezoid SF17	1 - 6	1S297040
Double Trapezoid SF16	1 - 6	1S297050
COMPLETE UPPER PART (INCL. SPRINGS, SCREWS, SCREW-ADAPTER) ⁽¹⁾		
Oblong	1 - 4	1S29701
Rectangle	1 - 4	1S29702
Rectangle with 4 x R = 0,5	1 - 4	1S29703
Trapezoid SF17	1 - 4	1S29704
Double Trapezoid SF16	1 - 4	1S29705
PUNCH (WITHOUT SPRINGS, SCREWS, SCREW-ADAPTER) (H-PM) ⁽¹⁾		
Oblong	1	1S29711
Rectangle	1	1S29712
Rectangle with 4 x R = 0,5	1	1S29713
Trapezoid SF17	1	1S29714
Double Trapezoid SF16	1	1S29715
DIE PLATE INSERT (H-PM) ⁽¹⁾		
Oblong	5	1S17411
Rectangle ⁽²⁾	5	1S17412
Trapezoid SF17	5	1S17414
Double Trapezoid SF16	5	1S17415
DIE PLATE ADAPTER (WITHOUT DIE PLATE INSERT) ⁽³⁾		
Incl. screws	6	1S1776



Details / Additional costs:

UPPER PART

Max. sheet thickness up to 2,50 mm

⁽¹⁾ Additional costs for reduced dimensional deviation

⁽¹⁾ Standard version with rooftop

X3-PM quality -> see page 68

Cross references:

see page

UPPER PART

Adjusting rings 34

ps:[®]passfit - explanation and additional costs 40

Additional costs for coating (punch size 2) 54

Polished cutting part (punch size 2) 55

STRIPPER

Set of spare PU springs - part-no. 1S2955 - pos. 4

Set of spare screw-adapter - part-no. 1S2954 - pos. 3

Set of spare screws - part-no. 1S2950 - pos. 2

LOWER PART

Compensating rings:

1 Set (2xt = 0,1 mm / 2xt = 0,3 mm / 2xt = 0,5 mm) - part-no. 1S3797

⁽²⁾ Suitable for rectangle, as well as rectangle 4 x R = 0,5

⁽³⁾ Brush version for low-scratch material handling

STRIPPER

LOWER PART

RTC cartridge and die carrier 41

Die clips 52

Slug-snap version for slug problems (die size 2) 57