

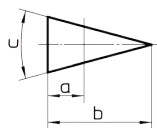
# PASS SPECIAL SHAPE TOOLS GROUP 2

(SF03, SF07, SF13, SF17)

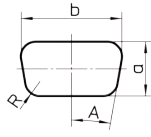
| SIZE                 | DIM. D                      | PART-NO. |
|----------------------|-----------------------------|----------|
| <b>PUNCH (H-PM®)</b> |                             |          |
| 0                    | 1,00 - 6,00                 | 121A0_C2 |
| 0                    | 6,01 - 10,50 <sup>(*)</sup> | 121B0_C2 |
| 1                    | 1,00 - 30,50                | 12111_C2 |
| 2                    | 30,51 - 40,00               | 12121_C2 |
| 2                    | 40,01 - 50,80               | 12122_C2 |
| 2                    | 50,81 - 60,00               | 12123_C2 |
| 2                    | 60,01 - 72,00               | 12124_C2 |
| 2                    | 72,01 - 76,20               | 12125_C2 |
| Reinforced           | 1,00 - 30,50                | V2111_C2 |
| Reinforced           | 30,51 - 40,00               | 121V1_C2 |

|                 |              |          |
|-----------------|--------------|----------|
| <b>STRIPPER</b> |              |          |
| 2               | 1,00 - 78,00 | 127H1_C2 |

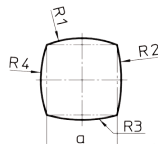
|                               |               |          |  |
|-------------------------------|---------------|----------|--|
| <b>DIE (HWS)</b>              |               |          |  |
| 1 <sup>(**)</sup>             | 1,00 - 32,00  | 12611_C2 |  |
| 2 <sup>(***)</sup>            | 32,01 - 77,00 | 12621_C2 |  |
| 1 reinforced <sup>(**)</sup>  | 1,00 - 32,00  | V2611_C2 |  |
| 2 reinforced <sup>(***)</sup> | 32,01 - 42,00 | 126V1_C2 |  |
| 2 reinforced <sup>(***)</sup> | 42,01 - 62,00 | 126V2_C2 |  |



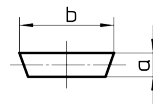
SF03



SF07



SF13



SF17



**Additional costs:**

**PUNCH**

Punches with shear (WT / DOWT / etc.) -> see page 56

<sup>(\*)</sup> Smaller 6,00 mm

Cutting part under 1,00 mm

X3-PM quality -> see page 68

**STRIPPER**

PU coating for low-scratch material handling

**DIE**

<sup>(\*\*)</sup> H-PM® quality

<sup>(\*\*\*)</sup> H-PM® quality

Slug-stop version (negative cutting)

Additional keyway

Brush version for low-scratch material handling

X8-PM quality -> see page 68

**Cross references:**

**PUNCH**

|   |         |
|---|---------|
| Fully guided punch                              | 15      |
| Slitting tools for slittings close to embossing | 30 - 31 |
| Adjusting rings                                 | 34      |
| Punch chuck                                     | 35      |
| ps:®passfit - explanation and additional costs  | 40      |
| Additional costs for coating                    | 54      |
| Polished cutting part                           | 55      |

**STRIPPER**

|                   |    |
|-------------------|----|
| Spare parts       | 52 |
| Push-out stripper | 53 |
| PU stripper       | 65 |

**DIE**

|                                       |    |
|---------------------------------------|----|
| Adapter rings                         | 35 |
| Compensating rings                    | 38 |
| RTC cartridge and die carrier         | 41 |
| Die clips                             | 52 |
| Slug-snap version (for slug-problems) | 57 |