

# PASS SPECIAL SHAPE TOOLS GROUP 1

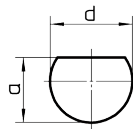
(SF01, SF02, SF04, SF05)



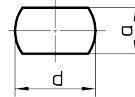
SIZE	DIM. D	PART-NO.
<b>PUNCH (H-PM®)</b>		
0	1,00 - 6,00	121A0_C1
0	6,01 - 10,50 <sup>(1)</sup>	121B0_C1
1	1,00 - 30,50	12111_C1
2	30,51 - 40,00	12121_C1
2	40,01 - 50,80	12122_C1
2	50,81 - 60,00	12123_C1
2	60,01 - 72,00	12124_C1
2	72,01 - 76,20	12125_C1
Reinforced	1,00 - 30,50	V2111_C1
Reinforced	30,51 - 40,00	121V1_C1

<b>STRIPPER</b>		
2	1,00 - 78,00	127H1_C1

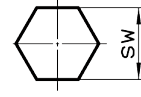
<b>DIE (HWS)</b>		
1 <sup>(2)</sup>	1,00 - 32,00	12611_C1
2 <sup>(3)</sup>	32,01 - 77,00	12621_C1
1 reinforced <sup>(2)</sup>	1,00 - 32,00	V2611_C1
2 reinforced <sup>(3)</sup>	32,01 - 42,00	126V1_C1
2 reinforced <sup>(3)</sup>	42,01 - 62,00	126V2_C1



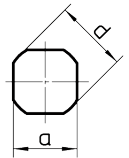
SF01



SF02



SF04



SF05

Additional costs:

## PUNCH

Punches with shear (WT / DOWT / etc.) -> see page 56

<sup>(1)</sup> Smaller 6,00 mm

Cutting part under 1,00 mm

X3-PM quality -> see page 68

Cross references:

## PUNCH

Fully guided punch	15
Adjusting rings	34
Punch chuck	35
ps:®passfit - explanation and additional costs	40
Additional costs for coating	54
Polished cutting part	55

see page

## STRIPPER

PU coating for low-scratch material handling

## STRIPPER

Spare parts	52
PU stripper	65

## DIE

<sup>(2)</sup> H-PM® quality

<sup>(3)</sup> H-PM® quality

Slug-stop version (negative cutting)

Additional keyway

Brush version for low-scratch material handling

X8-PM quality -> see page 68

## DIE

Adapter rings	35
Compensating rings	38
RTC cartridge and die carrier	41
Die clips	52
Slug-snap version (for slug-problems)	57