

PASS PUNCHING TOOLS (STANDARD) SIZE 3



DESCRIPTION	DIM. D	PART-NO.
ROUND		
Punch (H-PM®)	76,21 - 105,00 mm	101311C
Die	77,01 - 107,00 mm	106311C
Automatic stripper	78,01 - 107,00 mm	110311C
Manual stripper	78,01 - 107,00 mm	111311C
SQUARE		
Punch (H-PM®)	53,91 - 74,25 mm	101312C
Die	54,91 - 75,50 mm	106312C
Automatic stripper	56,01 - 77,00 mm	110312C
Manual stripper	56,01 - 77,00 mm	111312C
RECTANGLE		
Punch (H-PM®)	76,21 - 105,00 mm	101313C
Die	77,01 - 107,00 mm	106313C
Automatic stripper	78,01 - 107,00 mm	110313C
Manual stripper	78,01 - 107,00 mm	111313C
OBLONG		
Punch (H-PM®)	76,21 - 105,00 mm	101314C
Die	77,01 - 107,00 mm	106314C
Automatic stripper	78,01 - 107,00 mm	110314C
Manual stripper	78,01 - 107,00 mm	111314C

Additional costs:

PUNCH

Punches with shear (WT / DOWT / etc.) -> see page 56

Cutting part under 1,00 mm

4 x corner radius

X3-PM quality -> see page 68

Cross references:

PUNCH

ps:®passfit - explanation and additional costs

Additional costs for coating

Polished cutting part

Adjusting rings

see page

40

54

55

62

STRIPPER

Polished version for low-scratch material handling

STRIPPER

Spare parts

PU stripper

52

65

DIE

Slug-stop version (negative cutting)

Additional keyway

Brush version for low-scratch material handling

X8-PM quality -> see page 68

DIE

Slug-snap version (for slug problems) - price on request

Adapter rings

57

62

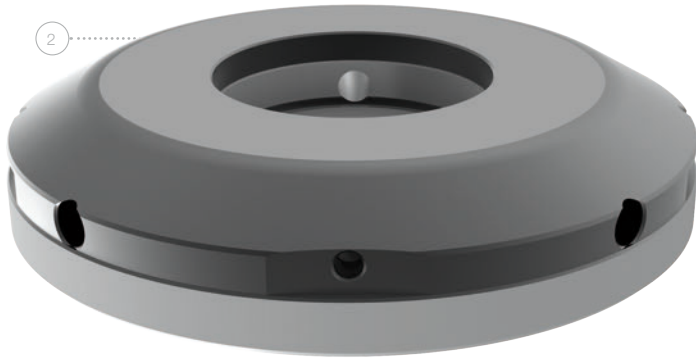
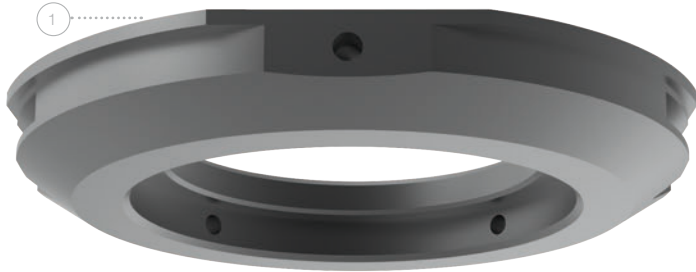
PASS PUNCHING TOOLS (FORM) SIZE 3

DESCRIPTION	DIM. D	PART-NO.
SPECIAL SHAPE TOOLS GROUP 1 (SF01, SF02, SF04, SF05)		
Punch (H-PM®)	76,21 - 105,00 mm	12131__C1
Die	77,01 - 107,00 mm	12631__C1
Automatic stripper	78,01 - 107,00 mm	12731__C1
Manual stripper	78,01 - 107,00 mm	1273D__C1
SPECIAL SHAPE TOOLS GROUP 2 (SF03, SF07, SF13, SF17)		
Punch (H-PM®)	76,21 - 105,00 mm	12131__C2
Die	77,01 - 107,00 mm	12631__C2
Automatic stripper	78,01 - 107,00 mm	12731__C2
Manual stripper	78,01 - 107,00 mm	1273D__C2
SPECIAL SHAPE TOOLS GROUP 3 (SF06, SF08, SF14, SF16)		
Punch (H-PM®)	76,21 - 105,00 mm	12131__C3
Die	77,01 - 107,00 mm	12631__C3
Automatic stripper	78,01 - 107,00 mm	12731__C3
Manual stripper	78,01 - 107,00 mm	1273D__C3
SPECIAL SHAPE GROUP 4 (SF09, SF10, SF11, SF12, SF15)		
Punch (H-PM®)	76,21 - 105,00 mm	12131__C4
Die	77,01 - 107,00 mm	12631__C4
Automatic stripper	78,01 - 107,00 mm	12731__C4
Manual stripper	78,01 - 107,00 mm	1273D__C4



Additional costs:	Cross references:	see page
PUNCH	PUNCH	
Punches with shear (WT / DOWT / etc.) -> see page 56	Types of special shapes	10 - 13
Cutting part under 1,00 mm	ps:®passfit - explanation and additional costs	40
X3-PM quality -> see page 68	Additional costs for coating	54
	Polished cutting part	55
	Adjusting rings	34 + 62
STRIPPER	STRIPPER	
Polished version for low-scratch material handling	Spare parts	52
	PU stripper	65
DIE	DIE	
Slug-stop version (negative cutting)	Slug-snap version (for slug problems) - price on request	57
Additional keyway	Adapter rings	62
Brush version for low-scratch material handling		
X8-PM quality -> see page 68		

PASS ADAPTER AND MANUAL ADJUSTING RINGS



DESCRIPTION	MACHINE GROUP	POSITION	PART-NO.
ADAPTER RING FOR STRIPPER			
From 3 to 2	G	1	120321
From 3 to 2	C - D	1*	120326

ADAPTER RING FOR DIE			
From 3 to 1	G	2	120310
From 3 to 2	G	2*	120320

ADJUSTING RINGS (MANUAL)			
1	A - D	3*	118102
2	A - D	3*	118202
3 (outside Ø 95 mm)	A - D	3	118302

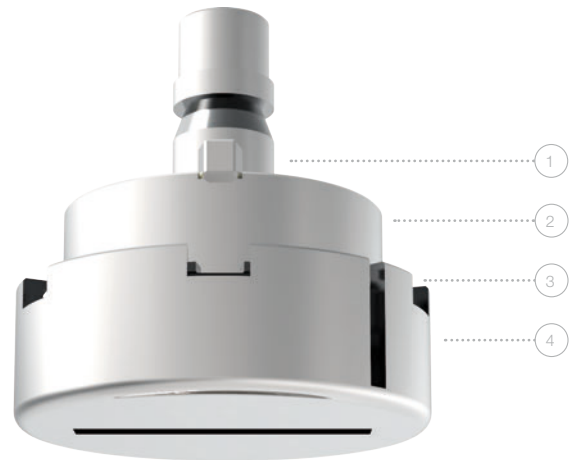
ps:®passfit ADJUSTING RINGS (MANUAL)			
1	A - D	4*	1181P2
2	A - D	4*	1182P2
3 (outside Ø 95 mm)	A - D	4	1183P2

* no picture

PASS SLITTING TOOL SIZE 2

FOR BOSCHERT PUNCHING MACHINES

DESCRIPTION	POSITION	PART NO.
SPRING LOADED SLITTING TOOL SIZE 2 - MEASURE 5 X 30 - 4 X R=0,5 ⁽¹⁾		
Upper part - complete	1 - 4	1S0330530
Spare slitting punch blade insert ⁽²⁾ (H-PM®)	2	1S0440
Spare stripper 6 x 57	4	1S0333
Die cl 0,1 - cl 0,3	5	106T530__
Die cl 0,4 - cl 1,0	5	109T530__
SPRING LOADED SLITTING TOOL SIZE 2 - MEASURE 5 X 40 - 4 X R=0,5 ⁽¹⁾		
Upper part - complete	1 - 4	1S0330540
Spare slitting punch blade insert ⁽²⁾ (H-PM®)	2	1S0441
Spare stripper 6 x 57	4	1S0333
Die cl 0,1 - cl 0,3	5	106T540__
Die cl 0,4 - cl 1,0	5	109T540__
SPRING LOADED SLITTING TOOL SIZE 2 - MEASURE 5 X 56 - 4 X R=0,5 ⁽¹⁾		
Upper part - complete	1 - 4	1S0330556
Spare slitting punch blade insert ⁽²⁾ (H-PM®)	2	1S0442
Spare stripper 6 x 57	4	1S0333
Die cl 0,1 - cl 0,3	5	106T556__
Die cl 0,4 - cl 1,0	5	109T556__
OTHER SPARE PARTS		
Spare springs		
Set of steel springs (2 x big / 2 x small)	3	1S0331



Details / Additional costs:

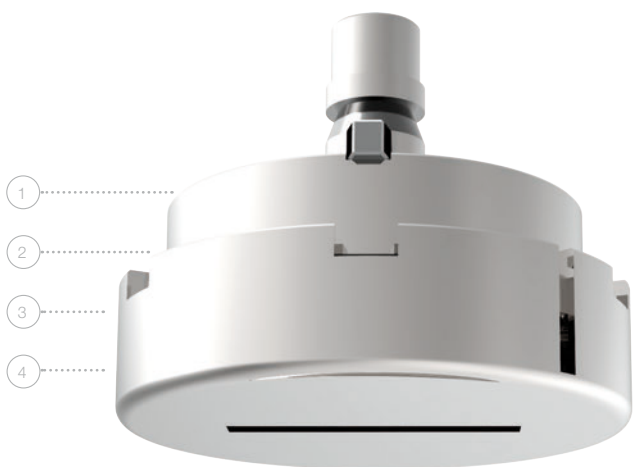
⁽¹⁾ For slitting: aluminium s = 4,00 mm,
steel s = 4,00 mm, stainless steel s = 2,5 mm

⁽²⁾ Slitting punch blade insert general with PASS T-MAX coating

⁽²⁾ Additional costs for reduced dimensional deviation

PASS SLITTING TOOL SIZE 3

FOR BOSCHERT PUNCHING MACHINES



DESCRIPTION	POSITION	PART-NO.
SPRING LOADED SLITTING TOOL SIZE 3 - MEASURE 8 X 30 - 4 X R = 1,00 ⁽¹⁾		
Upper part - complete	1 - 4	1S0350830
Spare slitting punch blade insert ⁽²⁾ (H-PM [®])	2	1S0446
Spare stripper	4	1S0355830
Die cl 0,3 - cl 1,0	5	109T830__
Die cl 1,2 - cl 1,5	5	109T830__
SPRING LOADED SLITTING TOOL SIZE 3 - MEASURE 8 X 40 - 4 X R = 1,00 ⁽¹⁾		
Upper part - complete	1 - 4	1S0350840
Spare slitting punch blade insert ⁽²⁾ (H-PM [®])	2	1S0447
Spare stripper	4	1S0355840
Die cl 0,3	5	106T840__
Die cl 0,4 - cl 1,2	5	109T840__
SPRING LOADED SLITTING TOOL SIZE 3 - MEASURE 8 X 56 - 4 X R = 1,00 ⁽¹⁾		
Upper part - complete	1 - 4	1S0350856
Spare slitting punch blade insert ⁽²⁾ (H-PM [®])	2	1S0448
Spare stripper	4	1S0355856
Die cl 0,3	5	106T856__
Die cl 0,4 - cl 1,0	5	109T856__
OTHER SPARE PARTS		
Spare springs		
Set of steel springs (4 x big / 4 x small)	3	1S03558X1

Details / Additional costs:

⁽¹⁾ For slitting: aluminium s = 6,00 mm,
steel s = 6,00 mm, stainless steel s = 3,00 mm

⁽²⁾ Slitting punch blade insert general with PASS T-MAX coating

⁽²⁾ Additional costs for reduced dimensional deviation

PASS PU STRIPPER

SPRING TYPE	PUNCH SHAPE ^(*)	RANGE	PART-NO.
WITHOUT SHAPE			
1	Flat size 1	- 12,00 mm	1S013810
1	Whisper size 1	- 12,00 mm	1S013820
2	Flat size 1	- 30,50 mm	1S013830
2	Whisper size 1	- 30,50 mm	1S013840
3	Flat size 2	- 48,00 mm	1S013850
3	Whisper size 2	- 48,00 mm	1S013860
	Flat / Whisper size 2	> 48,00 mm	on request

FOR ROUND PUNCHES			
1	Flat size 1	- 12,00 mm	1S013811
1	Whisper size 1	- 12,00 mm	1S013821
2	Flat size 1	- 30,50 mm	1S013831
2	Whisper size 1	- 30,50 mm	1S013841
3	Flat size 2	- 48,00 mm	1S013851
3	Whisper size 2	- 48,00 mm	1S013861
	Flat / Whisper size 2	> 48,00 mm	on request

FOR FORM PUNCHES			
1	Flat size 1	- 12,00 mm	1S013812
1	Whisper size 1	- 12,00 mm	1S013822
2	Flat size 1	- 30,50 mm	1S013832
2	Whisper size 1	- 30,50 mm	1S013842
3	Flat size 2	- 48,00 mm	1S013852
3	Whisper size 2	- 48,00 mm	1S013862
	Flat / Whisper size 2	> 48,00 mm	on request

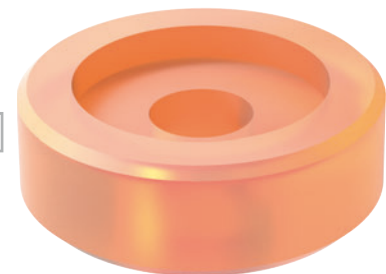
SPRING TYPE 1



SPRING TYPE 2



SPRING TYPE 3



Details:

PUNCH SECTION

^(*) Flat = length 74,00 mm

^(*) Whisper = length 77,00 mm