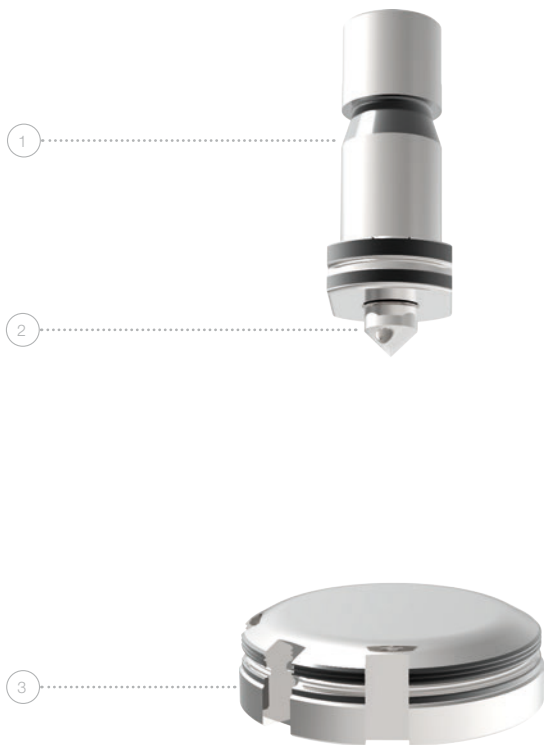


PASS CENTRE PUNCH TOOL FROM ABOVE

FOR MACHINE GROUP H



DESCRIPTION	SHEET THICKNESS	POSITION	PART-NO.
CENTRE PUNCH TOOL „SOLID“ - PUNCH CHUCK, CENTRE PUNCH, DIE⁽¹⁾			
Complete tool	1,00 - 4,50*	1 - 3	1S092A
Complete tool	4,51 - 8,00	1 - 3	1S092B
SPARE CENTRE PUNCH			
Length 55,3 mm	1,00 - 4,50*	2	1S0921
Length 51,3 mm	4,51 - 8,00	2	1S0922
SPARE DIE			
Flat	1,00 - 8,00	3	1S3940

* for machine group I up to 8,00 mm

Details / Additional costs:

ACCESSORIES

⁽¹⁾ Suitable adjusting ring - part-no. 118101 -> see page 34

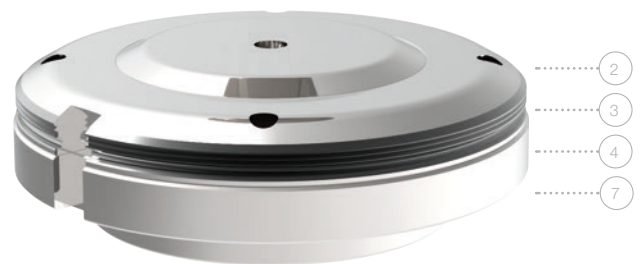
⁽¹⁾ Thread screw with shoulder M14 x 1,5 x 12 - part-no. 1S0925

PASS CENTRE PUNCH TOOL FROM BELOW

FOR MACHINE GROUP H

DESCRIPTION	SHEET THICKNESS	POSITION	PART-NO.
CENTRE PUNCH TOOL WITH STEPLESS ADJUSTABLE CENTRE MARK TEMPLATE DEPTH ^(*)			
Complete tool	1,00 - 4,00*	1 - 7	1S2800
SPARE PARTS FOR CENTRE PUNCH TOOL WITH STEPLESS ADJUSTABLE DEPTH			
Upper Part	1,00 - 4,00	1	1S2801
Stripper	1,00 - 4,00	2	1S2804
Centre punch	1,00 - 4,00	3	1S2805
Cushioning element	1,00 - 4,00	4	1S2806
Adjusting screw	1,00 - 4,00	7	1S2809

* for machine group I up to 8,00 mm



Details:

ACCESSORIES

^(*) Suitable adjusting ring - part-no. 118201 -> see page 34

PASS SIGNING TOOL

FOR SHEET THICKNESSES FROM 0,80 MM TO 8,00 MM



DESCRIPTION	POSITION	PART-NO.
COMPLETE SIGNING TOOL		
Consisting of:	1 - 7	1S390W
complete upper part, incl. adjusting ring, stripper Ø 20 and flat die		
COMPLETE SIGNING UPPER PART		
Consisting of:	1 - 5	1S3900
adapter, adjusting ring, signing pin and spring		
SPARE SIGNING PIN		
Made of H-PM® steel	5	1S3930
SPARE STRIPPER		
Ø 20	6	112211-20
SPARE DIE		
Flat	7	1S3940

Details: see page

ACCESSORIES

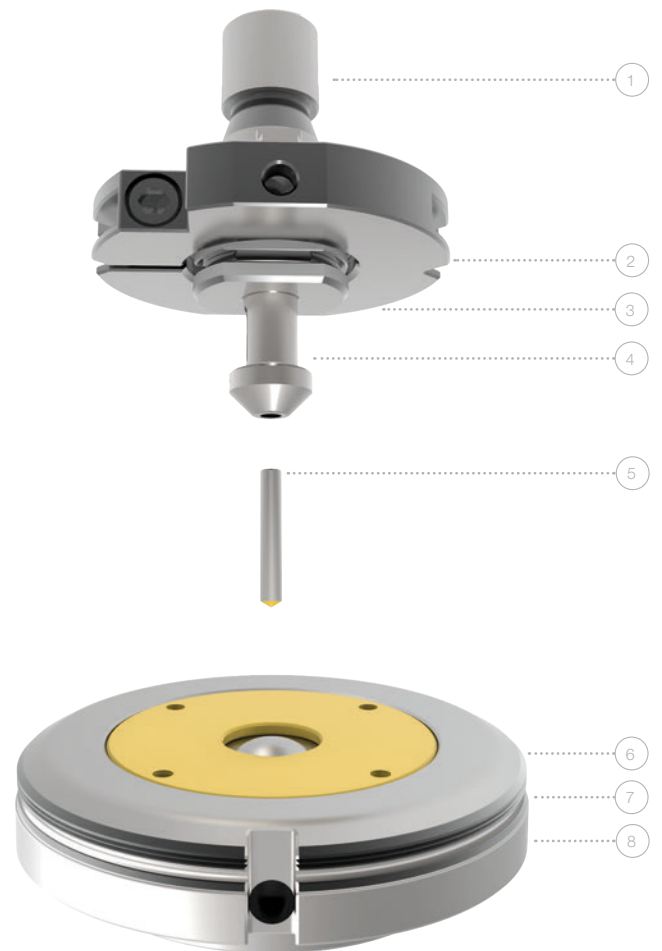
Spare adjusting ring - part-no. 118101 34

Option „signing“ must be unlocked in the machine controlling

PASS ENGRAVING TOOL

FOR SHEET THICKNESSES FROM 1,00 MM TO 8,00 MM

DESCRIPTION	POSITION	PART-NO.
ENGRAVING TOOL INCL. DIE AND BALL CASTER		
Consisting of:	1 - 8	199103950
complete upper part, incl. 3 types of springs, adjusting ring, die and ball caster		
ENGRAVING TOOL UPPER PART		
Incl. 3 types of springs	1 - 5	199103950-1
SPARE ENGRAVING PIN		
Diamond	5	199103962
SPARE DIE		
Incl. Ampco plate and ball caster	6 - 8	199103950-2
SPARE SPRINGS		
„Green“ for aluminium		91701025A
„Blue“ for steel		91701025B
„Red“ for stainless steel		91701025C



Details: see page

ACCESSORIES

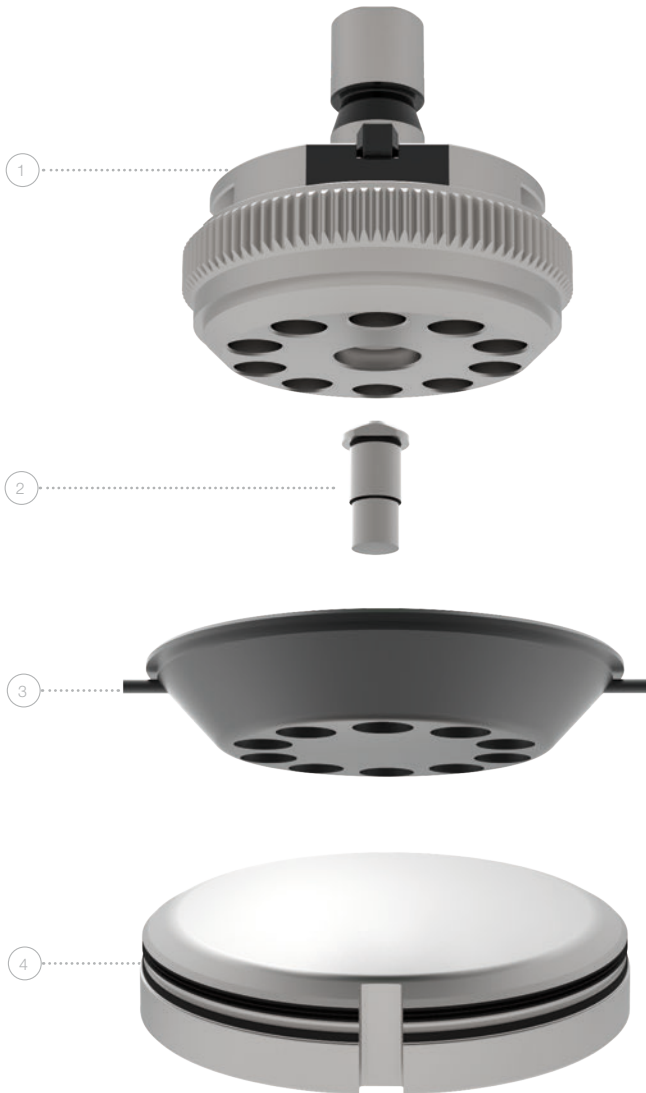
Spare adjusting ring - part-no. 118101 34

Option „engraving“ must be unlocked in the machine controlling

PASS LETTER MARKING TOOL 10-STATION

FOR MACHINE GROUP I

(TRUPUNCH1000, 2000, 2020, 3000, 5000 TRUMATIC1000, 3000, 6000, 7000)



DESCRIPTION	POSITION	PART-NO.
UPPER PART		
Punch holder	1	113S40
LETTER MARKING PUNCH INSERT		
Letter, digit or special sign on customer request	2	113P10_?
STRIPPER		
Standard round	3	113PA10
DIE FOR 10-STATION MULTITOOL		
Flat	4	113PM10

Cross references / Additional costs:

ACCESSORIES

RTC cartridge and die carrier - see page 41

Stripper in polished version for low-scratch material handling

PU coating for low-scratch material handling