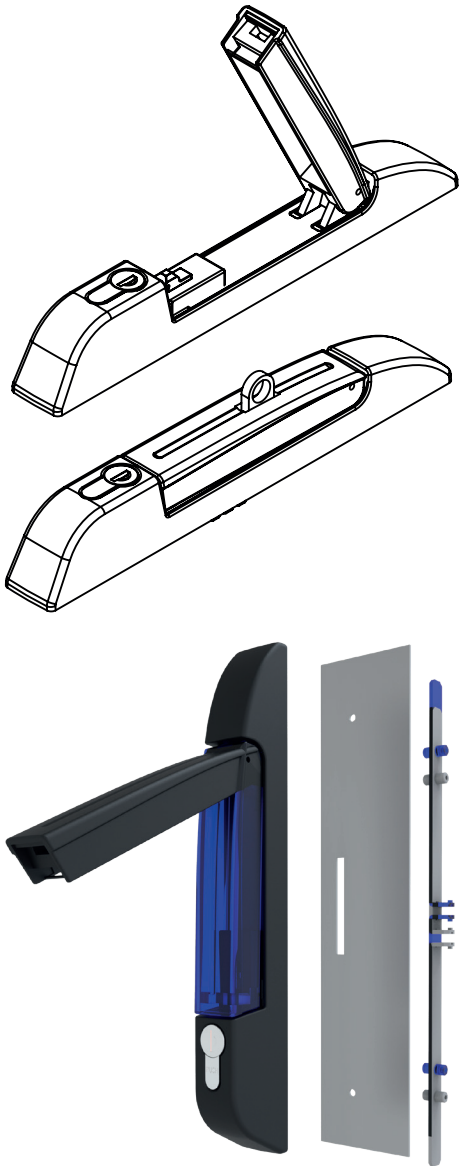
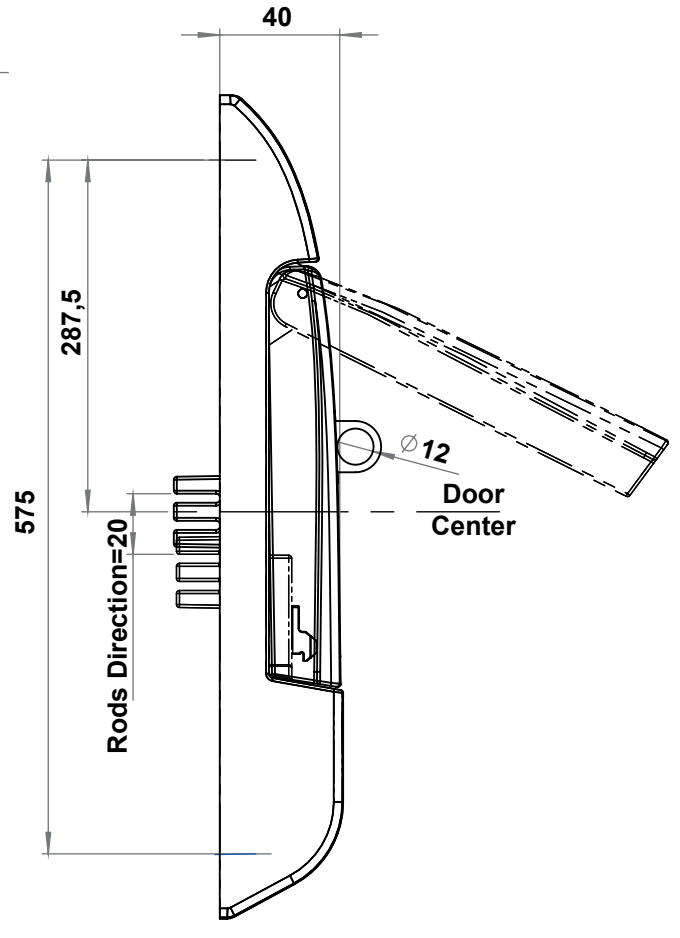
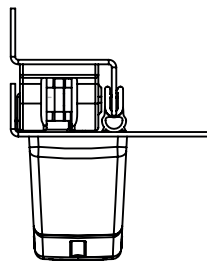
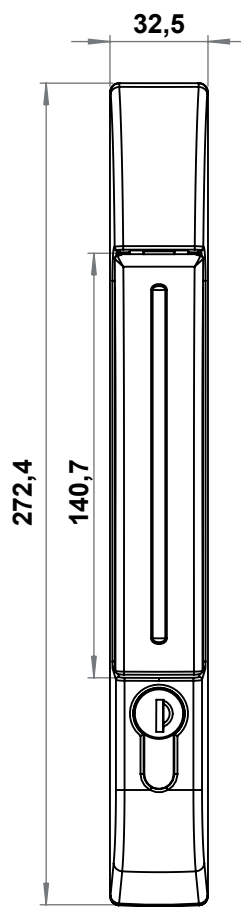
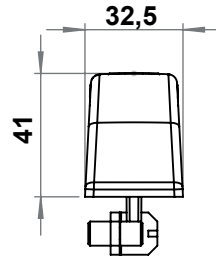
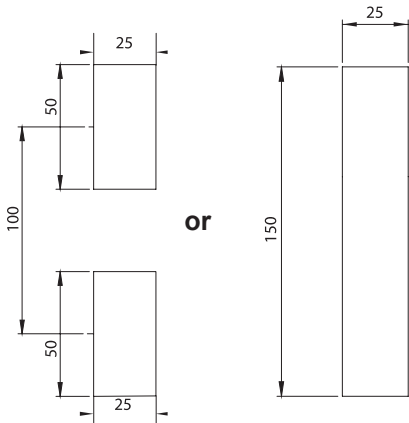
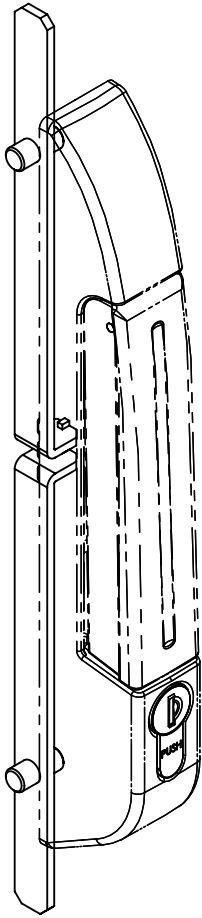


Linear Locking Systems

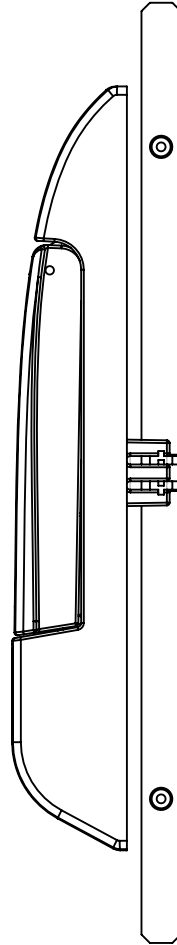


CUTOUT





**8404 Rod  
8510 Rod Catcher**



### 2753 - Insert Type

	Insert Types	
	Double bit 3 mm	2753 - 031
	Double bit 5 mm	2753 - 032
	Triangular 7 mm	2753 - 037
	Triangular 8 mm	2753 - 033
	Triangular 9 mm	2753 - 039
	Square 7 mm	2753 - 034
	Square 8 mm	2753 - 035
	Slotted	2753 - 038

### 2753 - With Profile Cylinder

	Keyed 3333	2753 - 013
	Keyed Same	2753 - 017
	Keyed Differ	2753 - 019

### 2753 - Push Lock

	Keyed 3333	2753 - 713
	Keyed Same	2753 - 717
	Keyed Differ	2753 - 719



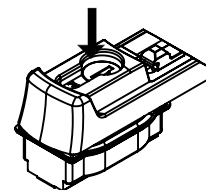
### MATERIAL

**Housing** : Zinc die, black coated  
**Handle** : Zinc die, black coated  
**Padlock Device** : Stainless steel AISI 304

### OPTIONS

**Flat Rods** :  
**Flat Rod Guides** :  
**Rod Catchers** :

### PUSH LOCK

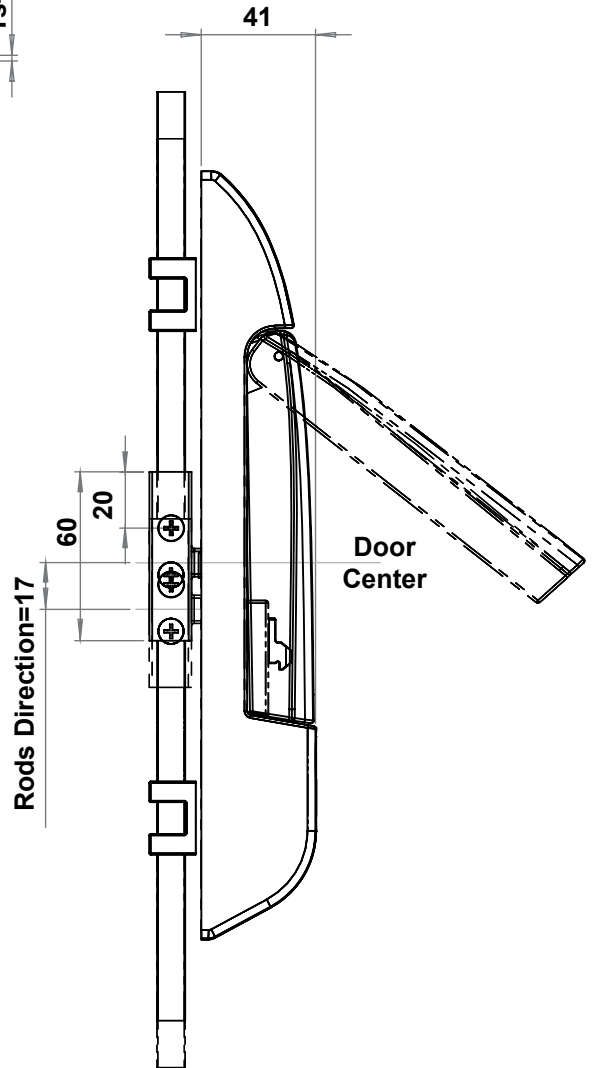
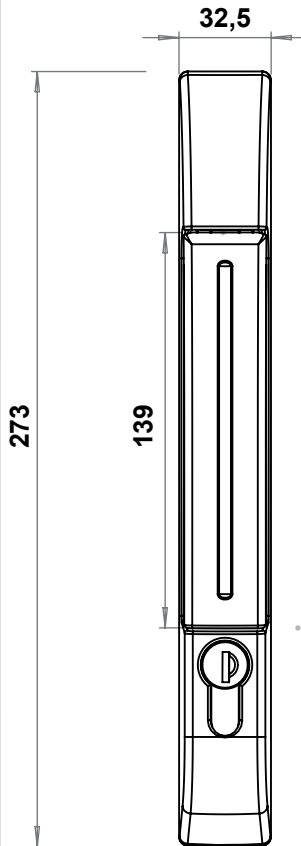
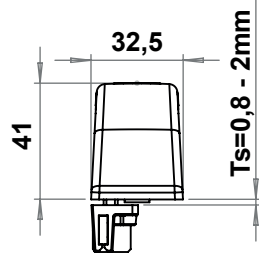
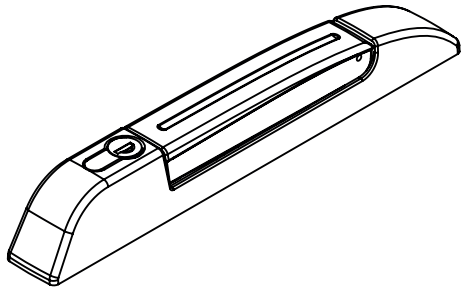


If the key is at "open" position, the handle is opened by pushing the cylinder

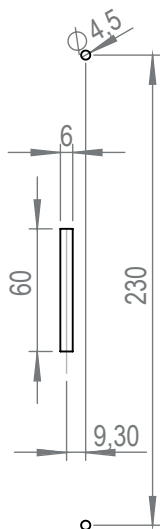
If the key is at "closed" position, the handle can not be opened.



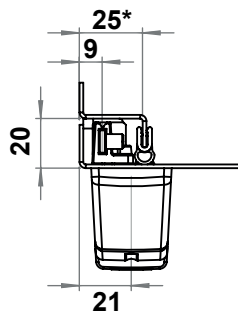
LH/RH



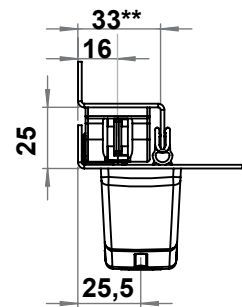
CUTOUT



3x10 Rod Application

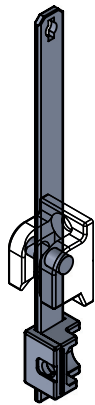


3x14 Rod Application

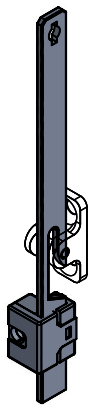


The dimension is determined together with the self gripping seal 6935-100. If the seal is not used, than the dimension will be 22mm

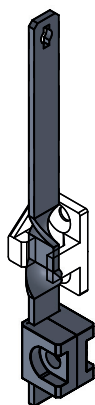
The dimension is determined together with the self gripping seal 6935-100. If the seal is not used, than the dimension will be 20mm



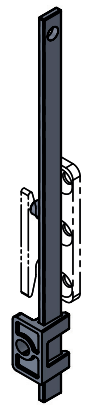
**8401 Rod  
8510 Rod Catcher**



**8402 Rod  
8513 Rod Catcher**



**8409 Rod  
8516 Rod Catcher**



**8417 Rod 3x10mm  
8517 Rod Catcher**

### 2752 - Insert Type

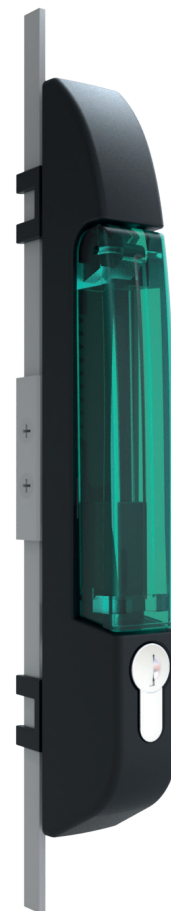
	Insert Types	3x14 According to Rod	3x10 According to Rod
	Double bit 3 mm	2752 - 031	2752 - 061
	Double bit 5 mm	2752 - 032	2752 - 062
	Triangular 7 mm	2752 - 037	2752 - 067
	Triangular 8 mm	2752 - 033	2752 - 063
	Triangular 9 mm	2752 - 039	2752 - 069
	Square 7 mm	2752 - 034	2752 - 064
	Square 8 mm	2752 - 035	2752 - 065
	Slotted	2752 - 038	2752 - 068

### 2752 - With Profile Cylinder

		3x14 According to Rod	3x10 According to Rod
	Keyed 3333	2752 - 013	2752 - 053
	Keyed Same	2752 - 017	2752 - 057
	Keyed Differ	2752 - 019	2752 - 059

### 2752 - Push Lock

		3x14 According to Rod	3x10 According to Rod
	Keyed 3333	2752 - 713	2752 - 753
	Keyed Same	2752 - 717	2752 - 757
	Keyed Differ	2752 - 719	2752 - 759



Linear Locking Systems

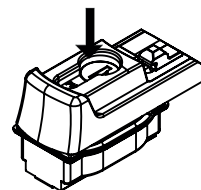
### MATERIAL

**Housing** : Polyamide (PA6 GFR30), black  
**Handle** : Zinc die, black coated  
**Padlock Device** : Stainless steel AISI 304

### OPTIONS

**Flat Rods** :  
**Flat Rod Guides** :  
**Rod Catchers** :

### PUSH LOCK

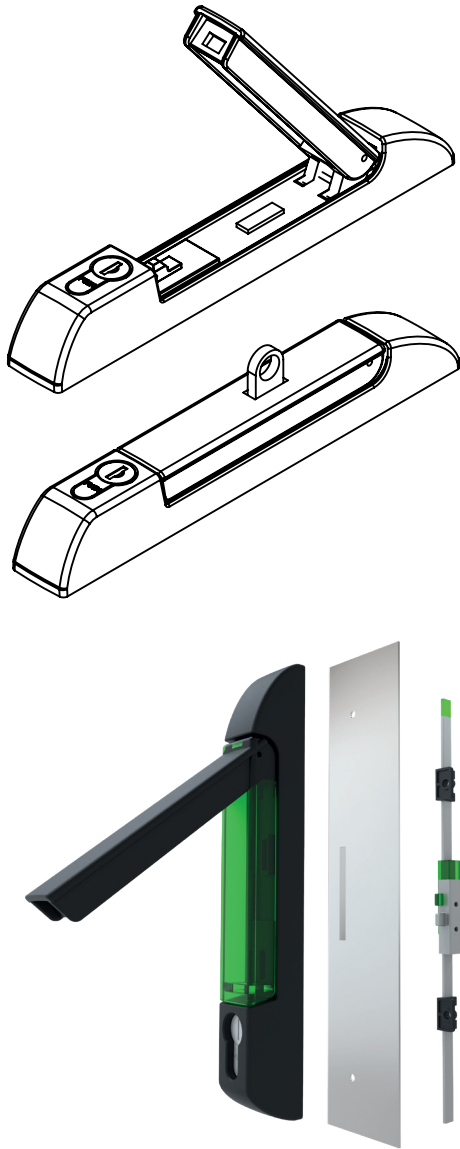


If the key is at "open" position, the handle is opened by pushing the cylinder

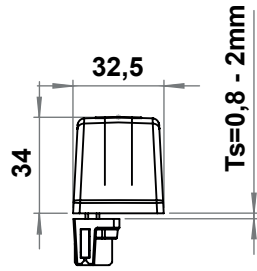
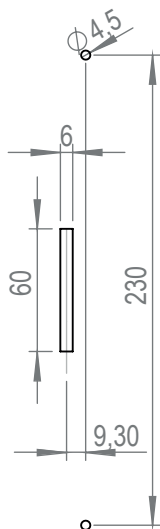
If the key is at "closed" position, the handle can not be opened.



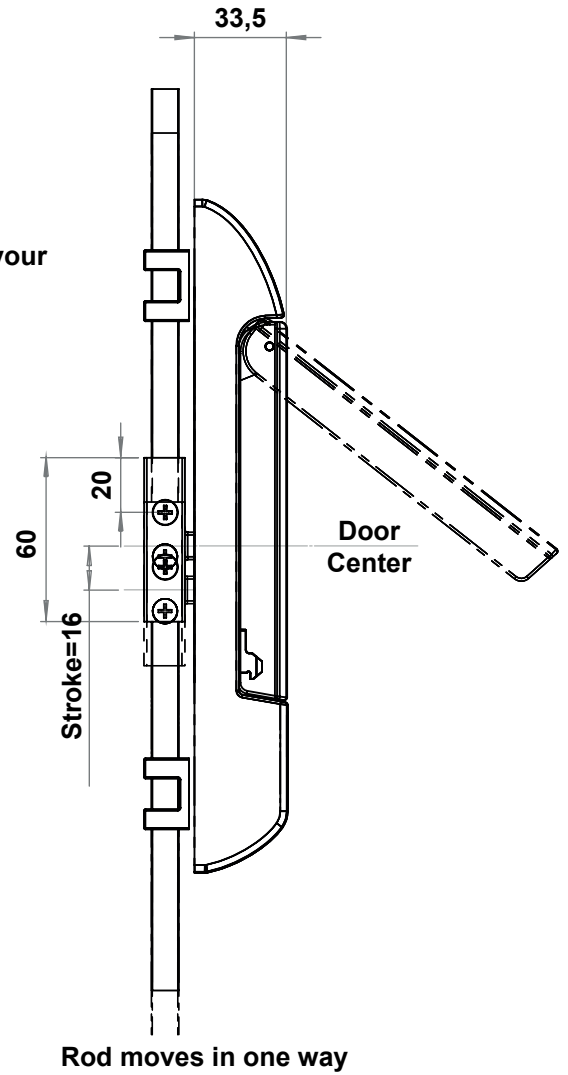
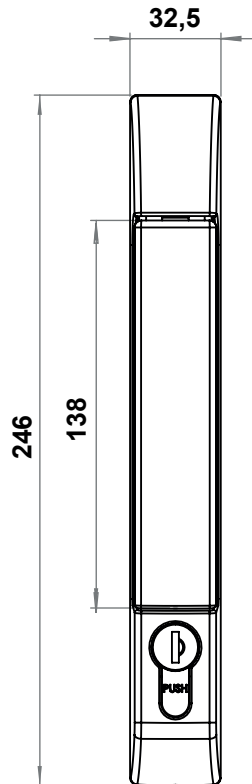
LH/RH



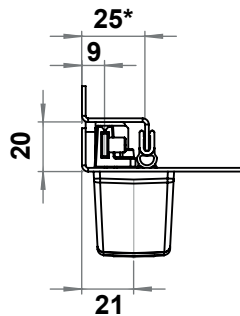
CUTOUT



Please contact us for your other Ts requests

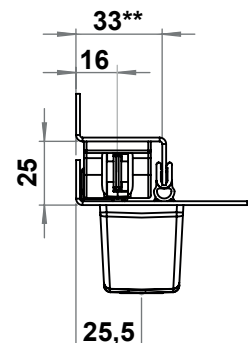


3x10 Rod Application

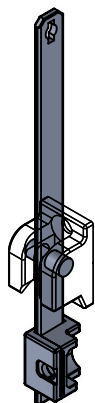


The dimension is determined together with the self gripping seal 6935-100. If the seal is not used, than the dimension will be 22mm

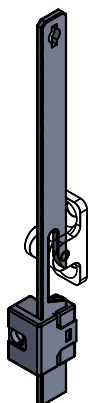
3x14 Rod Application



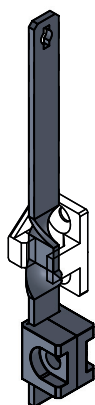
The dimension is determined together with the self gripping seal 6935-100. If the seal is not used, than the dimension will be 30mm



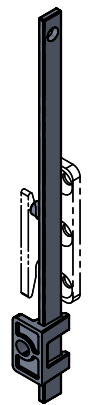
**8401 Rod  
8510 Rod Catcher**



**8402 Rod  
8513 Rod Catcher**



**8409 Rod  
8516 Rod Catcher**



**8417 Rod  
8517 Rod Catcher**



Linear Locking Systems

### MATERIAL

- Housing** : Zinc die, black coated
- Handle** : Zinc die, black coated
- Padlock Device** : Stainless steel AISI 304

### OPTIONS

- Flat Rods** :
- Flat Rod Guides** :
- Rod Catchers** :

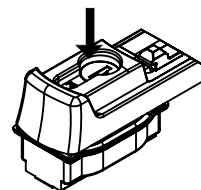
### 2682 - Plain

		<b>3x14 According to Rod</b>	<b>3x10 According to Rod</b>
	Keyed 3333	2682 - 713	2682 - 753
	Keyed Same	2682 - 717	2682 - 757
	Keyed Differ	2682 - 719	2682 - 759

### 2682 - Padlock Applicable

		<b>3x14 According to Rod</b>	<b>3x10 According to Rod</b>
	Keyed 3333	2682 - 813	2682 - 853
	Keyed Same	2682 - 817	2682 - 857
	Keyed Differ	2682 - 819	2682 - 859

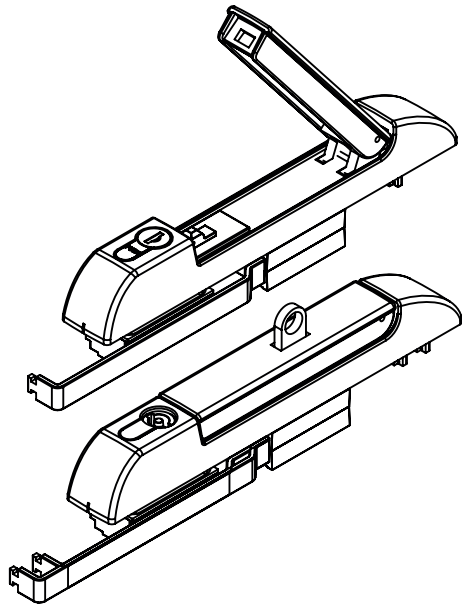
### PUSH LOCK



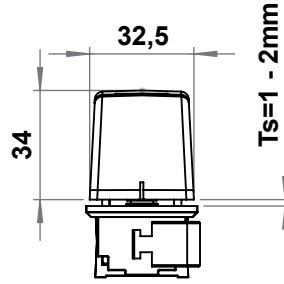
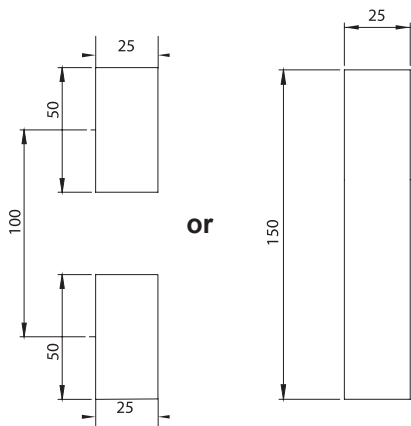
If the key is at "open" position, the handle is opened by pushing the cylinder

If the key is at "closed" position, the handle can not be opened.

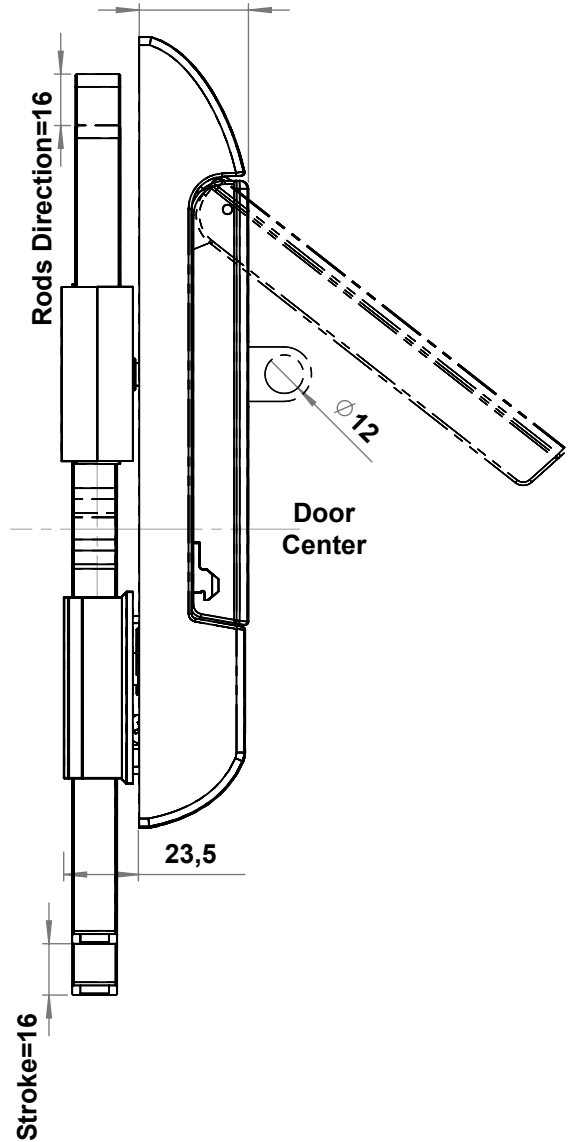
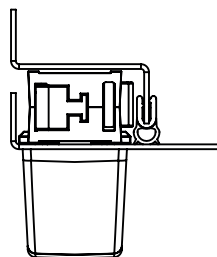
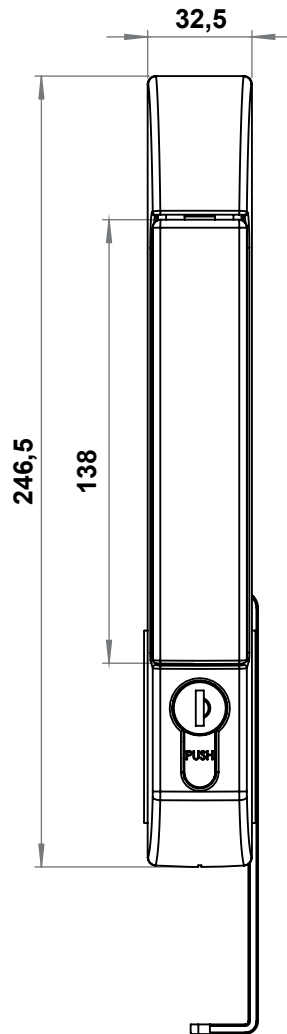




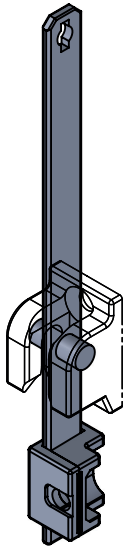
CUTOUT



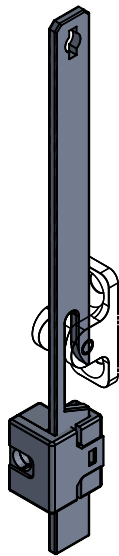
Please contact us for your other Ts requests



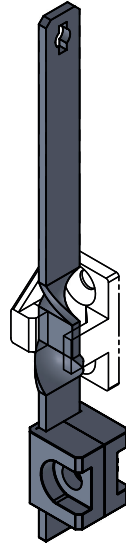
When the rod latch is moved by 90°, the stroke is 16mm for both sides



**8401 Rod**  
**8510 Rod Catcher**



**8402 Rod**  
**8510 Rod Catcher**



**8409 Rod**  
**8510 Rod Catcher**

### 2652 - Insert Type

		Plain	Padlock Applicable
	Double bit 3 mm	2652 - 031 - MK - XXX	2652 - 331 - MK - XXX
	Double bit 5 mm	2652 - 032 - MK - XXX	2652 - 332 - MK - XXX
	Triangular 7 mm	2652 - 037 - MK - XXX	2652 - 337 - MK - XXX
	Triangular 8 mm	2652 - 033 - MK - XXX	2652 - 333 - MK - XXX
	Triangular 9 mm	2652 - 039 - MK - XXX	2652 - 339 - MK - XXX
	Square 7 mm	2652 - 034 - MK - XXX	2652 - 334 - MK - XXX
	Square 8 mm	2652 - 035 - MK - XXX	2652 - 335 - MK - XXX
	Slotted	2652 - 038 - MK - XXX	2652 - 338 - MK - XXX

### 2652 - With Profile Cylinder

		Plain	Padlock Applicable
	Keyed 3333	2652 - 013 - MK - XXX	2652 - 313 - MK - XXX
	Keyed Same	2652 - 017 - MK - XXX	2652 - 317 - MK - XXX
	Keyed Differ	2652 - 019 - MK - XXX	2652 - 319 - MK - XXX

### 2652 - Push Lock

		Plain	Padlock Applicable
	Keyed 3333	2652 - 713 - MK - XXX	2652 - 813 - MK - XXX
	Keyed Same	2652 - 717 - MK - XXX	2652 - 817 - MK - XXX
	Keyed Differ	2652 - 719 - MK - XXX	2652 - 819 - MK - XXX



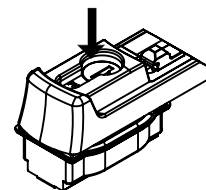
### MATERIAL

**Housing** : Zinc die, black coated  
**Handle** : Zinc die, black coated  
**Padlock Device** : Stainless steel AISI 304

### OPTIONS

**Flat Rods** :  
**Flat Rod Guides** :  
**Rod Catchers** :

### PUSH LOCK



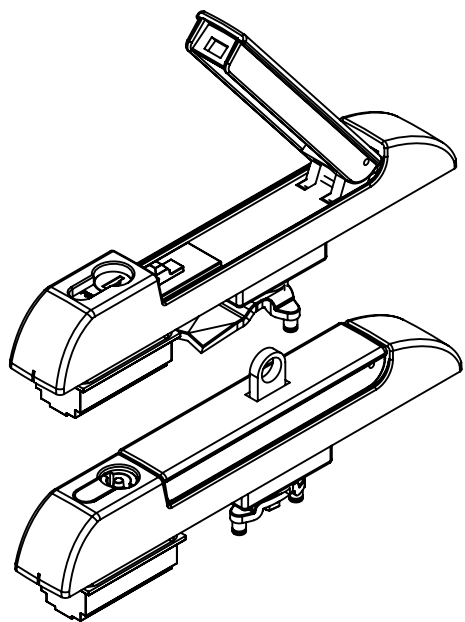
If the key is at "open" position, the handle is opened by pushing the cylinder

If the key is at "closed" position, the handle can not be opened.

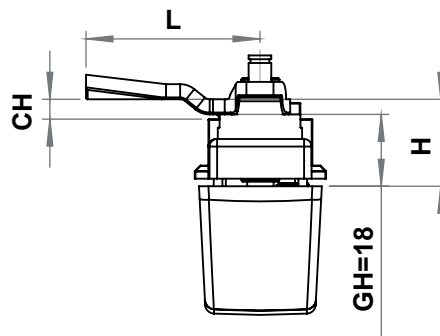
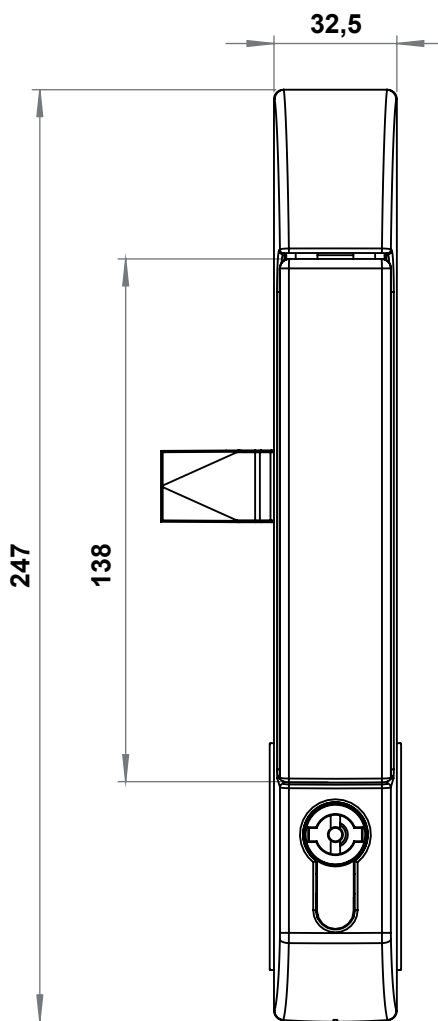
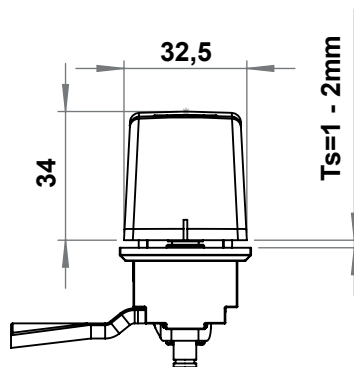
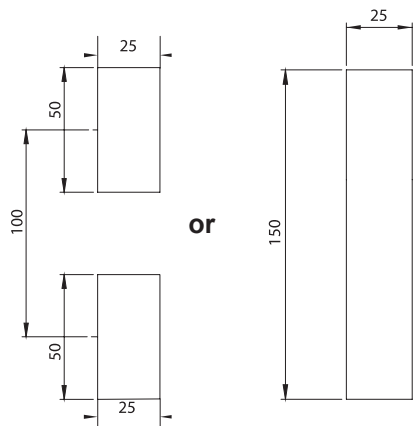


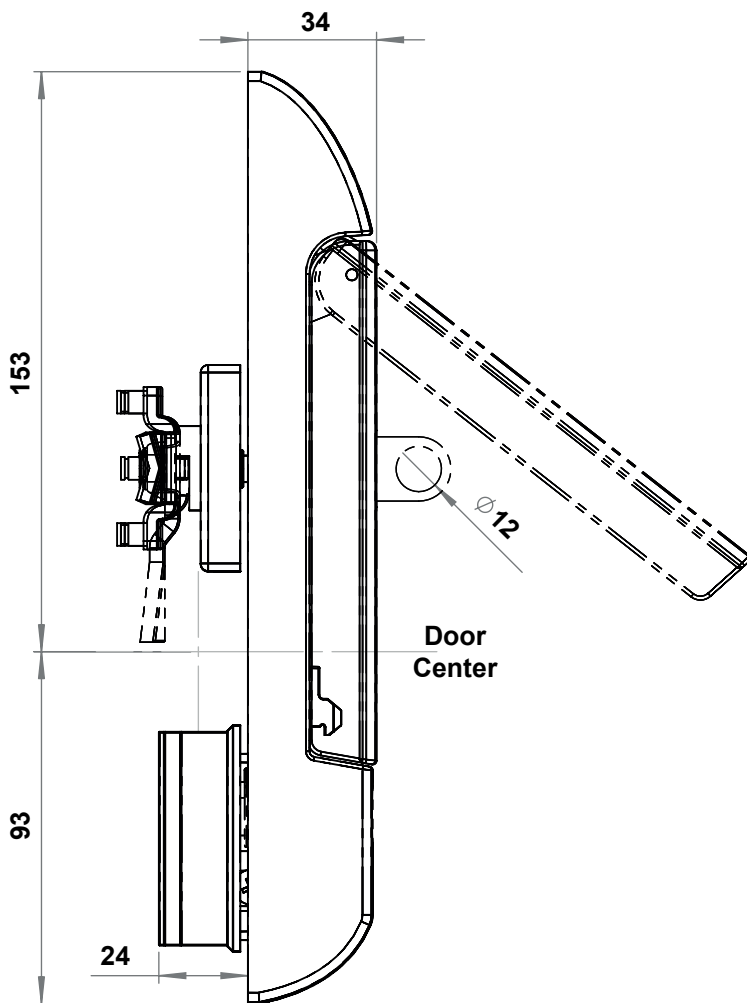


Linear Locking Systems



CUTOUT





### 2662 - Insert Type

		Plain	Padlock Applicable
	Double bit 3 mm	2662-031-XXX	2662-331-XXX
	Double bit 5 mm	2662-032-XXX	2662-332-XXX
	Triangular 7 mm	2662-037-XXX	2662-337-XXX
	Triangular 8 mm	2662-033-XXX	2662-333-XXX
	Triangular 9 mm	2662-039-XXX	2662-339-XXX
	Square 7 mm	2662-034-XXX	2662-334-XXX
	Square 8 mm	2662-035-XXX	2662-335-XXX
	Slotted	2662-038-XXX	2662-338-XXX

### 2662 - With Profile Cylinder

		Plain	Padlock Applicable
	Keyed 3333	2662-013-XXX	2662-313-XXX
	Keyed Same	2662-017-XXX	2662-317-XXX
	Keyed Differ	2662-019-XXX	2662-319-XXX

### 2662 - Push Lock

		Plain	Padlock Applicable
	Keyed 3333	2662-713-XXX	2662-813-XXX
	Keyed Same	2662-717-XXX	2662-817-XXX
	Keyed Differ	2662-719-XXX	2662-819-XXX



### MATERIAL

**Housing** : Zinc die, black coated  
**Handle** : Zinc die, black coated  
**Padlock Device** : Stainless steel AISI 304

### OPTIONS

**Cam Adapters** :  
**Cams** :  
**Round Rods** :  
**Rod Catchers** :