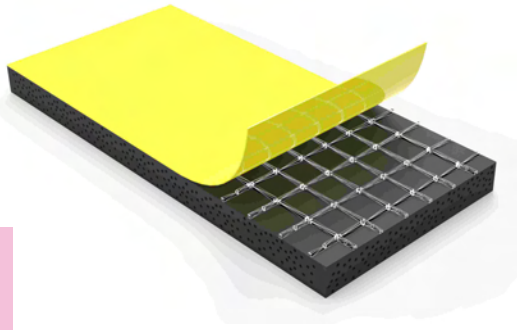


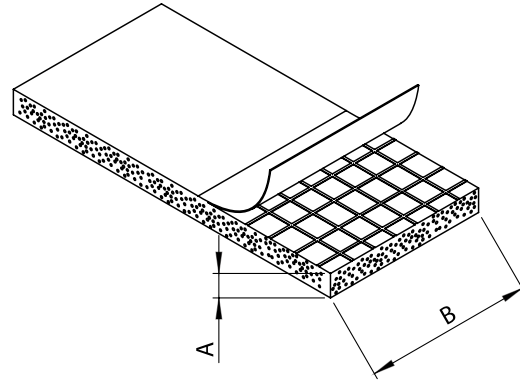
6300
Cell Sponge Rubber, EPDM



Gaskets

Material

EPDM



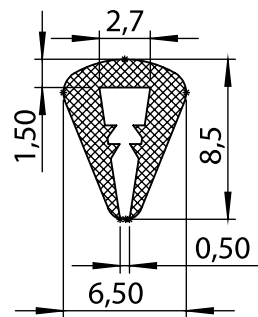
PE	EPDM	A (mm)	B (mm)
6210 - 200	6210 - 100	2	10
6215 - 200	6215 - 100	2	15
6220 - 200	6220 - 100	2	20
6225 - 200	6225 - 100	2	25
6310 - 200	6310 - 100	3	10
6315 - 200	6315 - 100	3	15
6320 - 200	6320 - 100	3	20
6325 - 200	6325 - 100	3	25
6330 - 200	6330 - 100	3	30
6510 - 200	6510 - 100	5	10
6515 - 200	6515 - 100	5	15
6520 - 200	6520 - 100	5	20
6525 - 200	6525 - 100	5	25
6530 - 200	6530 - 100	5	30
6535 - 200	6535 - 100	5	35
6540 - 200	6540 - 100	5	40

6990
U Fitol



Material

EPDM

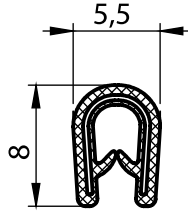


6990 - U Edge Protection

Item Number	6990 - 100
-------------	------------

6911 - Gasket

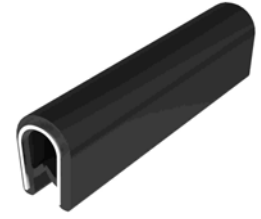
Item Number 6911 - 100



Material

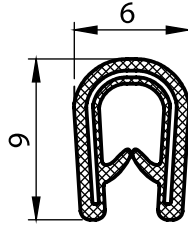
PVC, black
Steel spring core
For 0,8-1,5 mm thickness

6911



6912 - Gasket

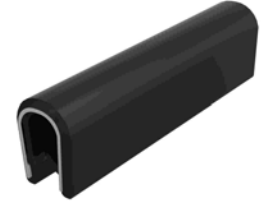
Item Number 6912 - 100



Material

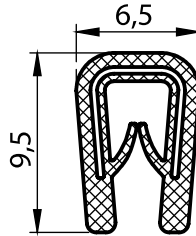
PVC, black
Steel spring core
For 1-2 mm thickness

6912



6913 - Gasket

Item Number 6913 - 100



Material

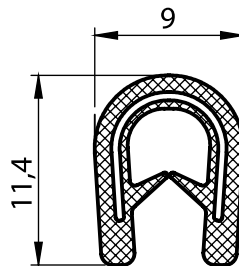
PVC, black
Steel spring core
For 1-2 mm thickness

6913



6914 - Gasket

Thickness	Item Number
1-2,5 mm	6914 - 100
2-4 mm	6914 - 120



Material

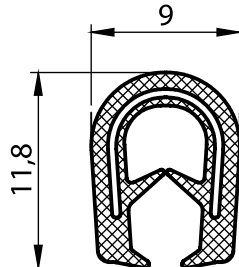
PVC, black
Steel spring core

6914



6915 - Gasket

Item Number 6915 - 102



Material

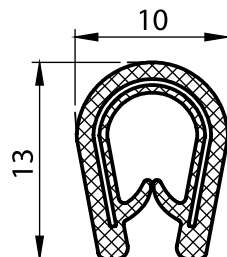
PVC, black
Steel spring core
For 1-3 mm thickness

6915



6916 - Gasket

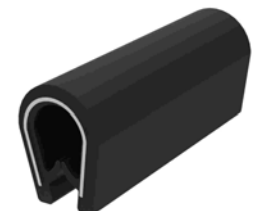
Item Number 6916 - 100



Material

PVC, black
Steel spring core
For 1-4 mm thickness

6916

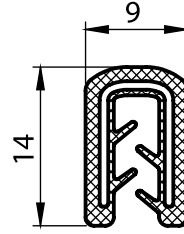


6917



6917 - Gasket

Item Number 6917 - 100



Material

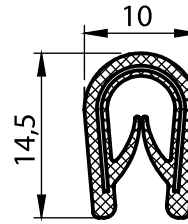
PVC, black
Steel spring core
For 1-2,5 mm thickness

6918



6918 - Gasket

Item Number 6918 - 100



Material

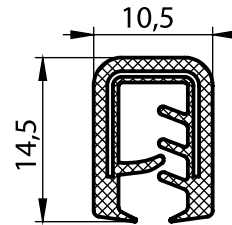
PVC, black
Steel spring core
For 1-4 mm thickness

6919



6919 - Gasket

Item Number 6919 - 100



Material

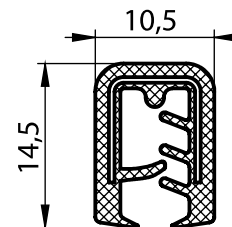
PVC, black
Steel spring core
For 2-5 mm thickness

6920



6920 - Gasket

Item Number 6920 - 102



Material

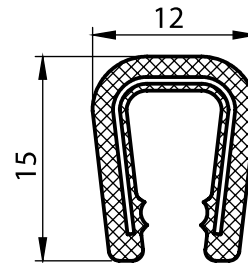
PVC, black
Steel spring core
For 2-5 mm thickness

6922



6922 - Gasket

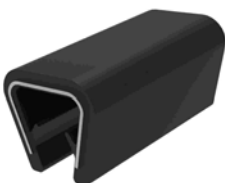
Kalınlık	Item Number
6-8 mm	6922 - 100
8-10 mm	6922 - 120



Material

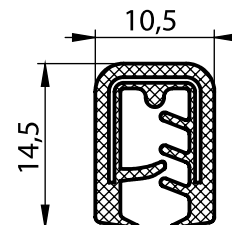
PVC, black
Steel spring core

6923



6923 - Gasket

Item Number 6923 - 100

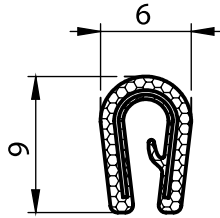


Material

PVC, black
Steel spring core
For 10-12 mm thickness

6924 - Gasket

Item Number 6924 - 100



Material

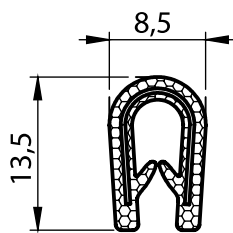
Epdm, black
Steel spring core
For 1-2 mm thickness

6924



6925 - Gasket

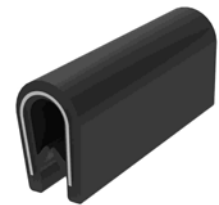
Item Number 6925 - 100



Material

Epdm, black
Steel spring core
For 1-3 mm thickness

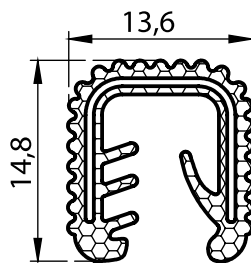
6925



Gaskets

6926 - Gasket

Item Number 6926 - 100



Material

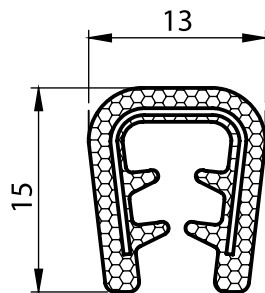
Epdm, black
Steel spring core
For 5-6 mm thickness

6926



6927 - Gasket

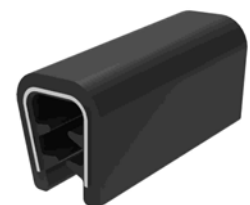
Item Number 6927 - 100



Material

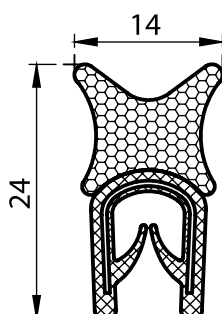
Epdm, black
Steel spring core
For 5-8 mm thickness

6927



6928 - Gasket

Item Number 6928 - 100



Material

Epdm, black
Steel spring core
For 1-4 mm thickness

6928

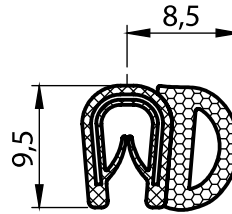


6929



6929 - Gasket

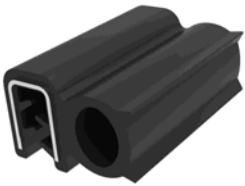
Item Number 6929 - 100



Material

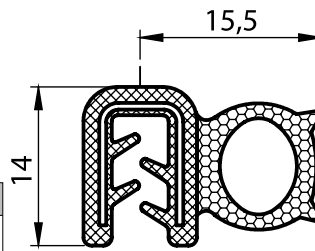
Epdm + PVC, black
Steel spring core
For 1-2 mm thickness

6930



6930 - Gasket

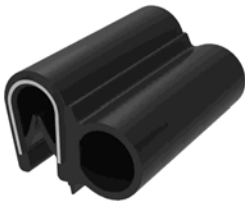
Item Number 6930 - 100



Material

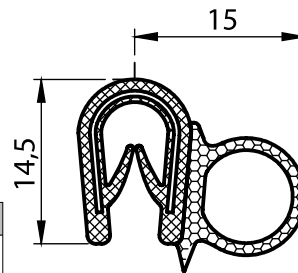
Epdm + PVC, black
Steel spring core
For 1-2,5 mm thickness

6931



6931 - Gasket

Item Number 6931 - 100



Material

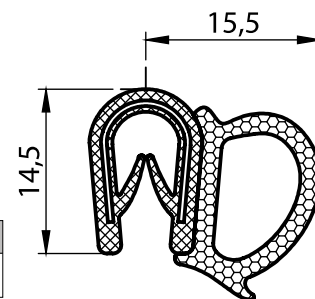
Epdm + PVC, black
Steel spring core
For 1-4 mm thickness

6932



6932 - Gasket

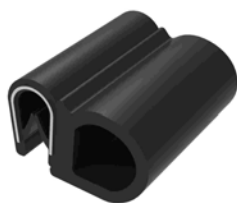
Item Number 6932 - 100



Material

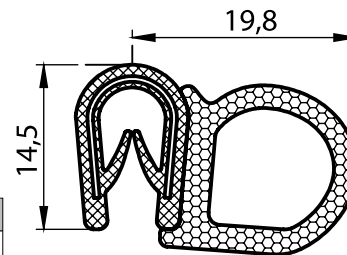
Epdm + PVC, black
Steel spring core
For 1-4 mm thickness

6933



6933 - Gasket

Item Number 6933 - 100



Material

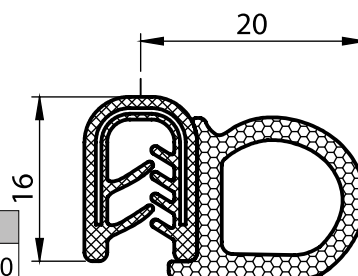
Epdm + PVC, black
Steel spring core
For 1-2 mm thickness

6934



6934 - Gasket

Item Number 6934 - 100

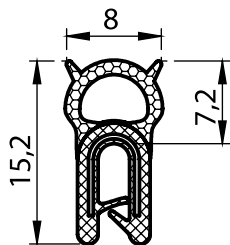


Material

Epdm + PVC, black
Steel spring core
For 1-4 mm thickness

6935 - Gasket

Item Number 6935 - 100



Material

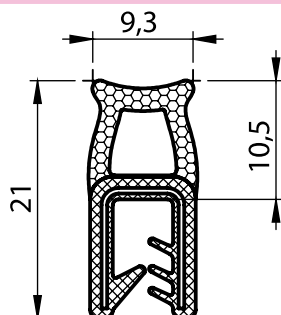
Epdm
steel spring core
For 0,5-1,5 mm thickness

6935



6936 - Gasket

Item Number 6936 - 100



Material

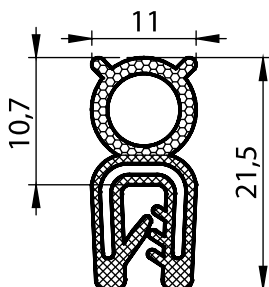
Epdm
steel spring core
For 1-3 mm thickness

6936



6903 - Gasket

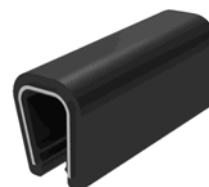
Item Number 6903 - 100



Material

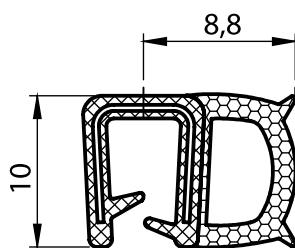
Epdm
steel spring core
For 1-3 mm thickness

6903



6937 - Gasket

Item Number 6937 - 100



Material

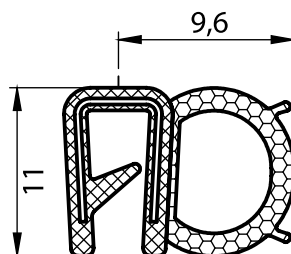
Epdm
steel spring core
For 1-2,5 mm thickness

6937



6938 - Gasket

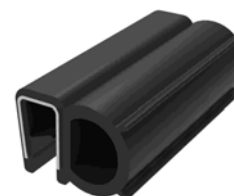
Item Number 6938 - 100



Material

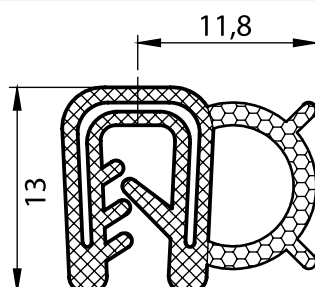
Epdm
steel spring core
For 1-2 mm thickness

6938



6902 - Gasket

Item Number 6902 - 100



Material

Epdm
steel spring core
For 2 mm thickness

6902

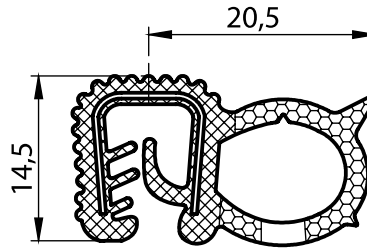


6901



6901 - Gasket

Thickness	Item Number
1 - 2,5 mm	6901 - 100
2 - 4 mm	6901 - 120
5 - 6 mm	6901 - 130



Malzeme

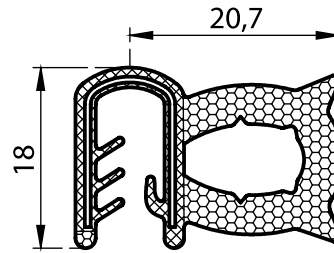
Epdm
Steel spring core

6904



6904 - Gasket

Item Number	6904 - 100
-------------	------------



Material

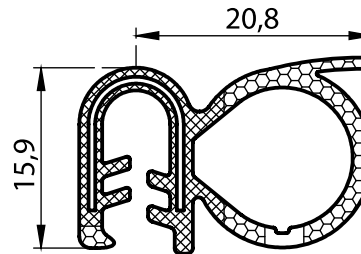
Epdm
Steel spring core
For 3,5-5 mm thickness

6905



6905 - Gasket

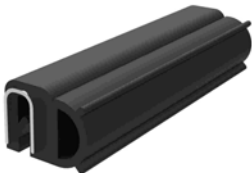
Item Number	6905 - 100
-------------	------------



Material

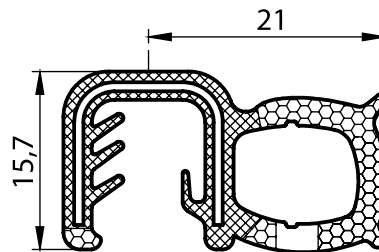
Epdm
Steel spring core
For 3-4 mm thickness

6906



6906 - Gasket

Item Number	6906 - 100
-------------	------------



Material

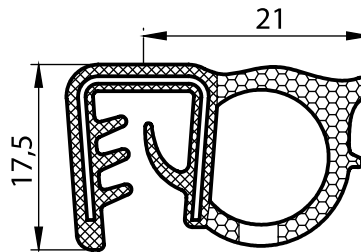
Epdm
Steel spring core
For 5-6 mm thickness

6907



6907 - Gasket

Item Number	6907 - 100
-------------	------------



Material

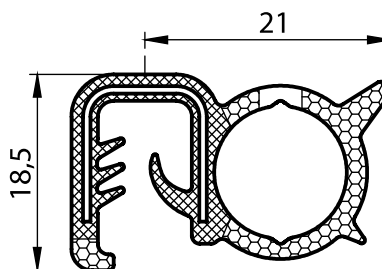
Epdm
Steel spring core
For 5-9 mm thickness

6970



6970 - Gasket

Item Number	6970 - 100
-------------	------------

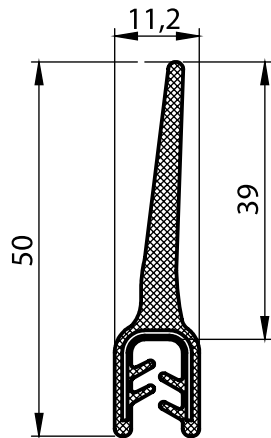


Material

Epdm
Steel spring core
For 2-4 mm thickness

6971 - Gasket

Item Number 6971 - 100



Material

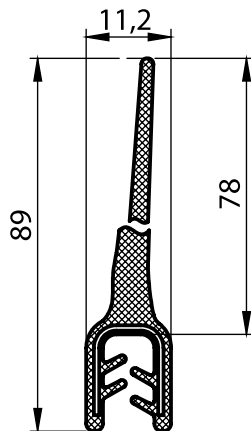
Epdm
Steel spring core
For 2-4 mm thickness

6971



6972 - Gasket

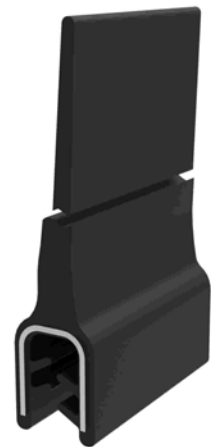
Item Number 6972 - 100



Material

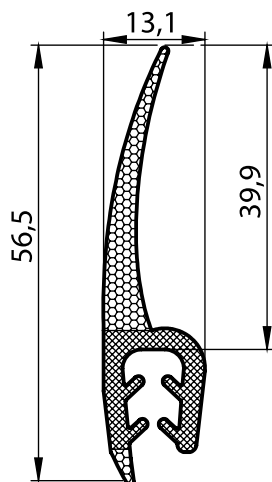
Epdm
Steel spring core
For 2-4 mm thickness

6972



6973 - Gasket

Item Number 6973 - 100



Material

Epdm
Steel spring core
For 4-6 mm thickness

6973

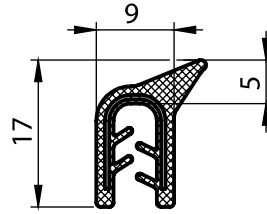


6974



6974 - Gasket

Item Number 6974 - 100



Material

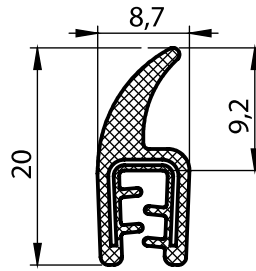
Epdm
Steel spring core
For 1,5-3 mm thickness

6975



6975 - Gasket

Item Number 6975 - 100



Material

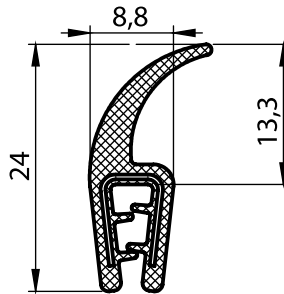
Epdm
Steel spring core
For 1-2 mm thickness

6976



6976 - Gasket

Item Number 6976 - 100



Material

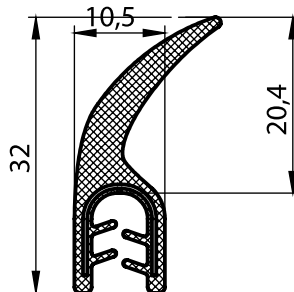
Epdm
Steel spring core
For 1,5-2,5 mm thickness

6977



6977 - Gasket

Item Number 6977 - 100



Material

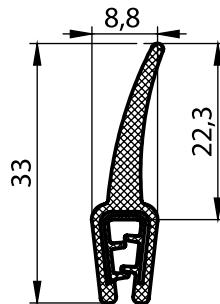
Epdm
Steel spring core
For 2-4 mm thickness

6978



6978 - Gasket

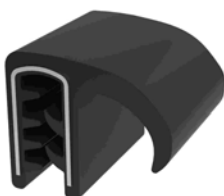
Item Number 6978 - 100



Material

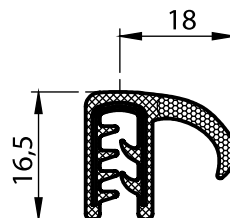
Epdm
Steel spring core
For 1-1,5 mm thickness

6979



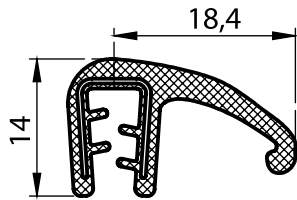
6979 - Gasket

Item Number 6979 - 100



Material

Epdm
Steel spring core
For 2-3 mm thickness



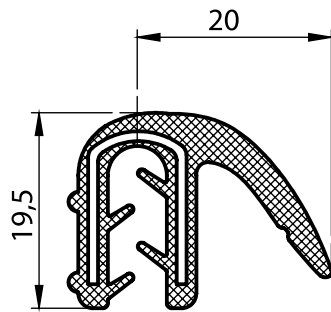
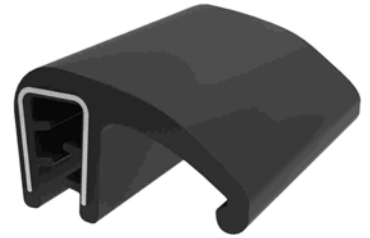
6980 - Gasket

Item Number 6980 - 100

Material

Epdm
Steel spring core
For 1-2,5 mm thickness

6980



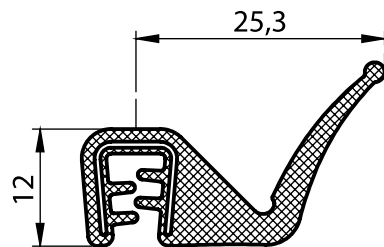
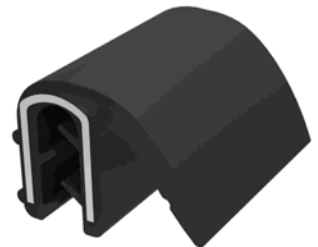
6981 - Gasket

Item Number 6981 - 100

Material

Epdm
Steel spring core
For 1-3,5 mm thickness

6981



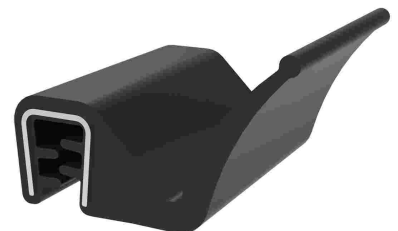
6982 - Gasket

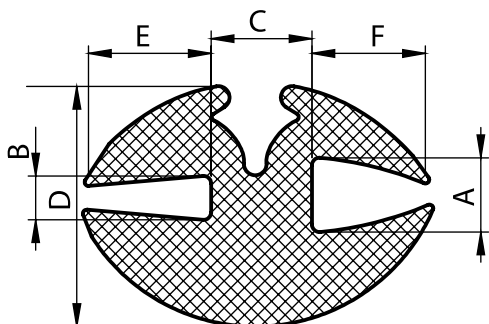
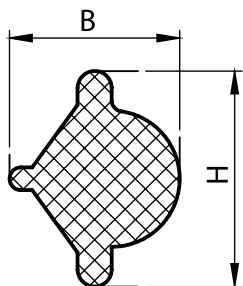
Item Number 6982 - 100

Material

Epdm
Steel spring core
For 1-2,5 mm thickness

6982



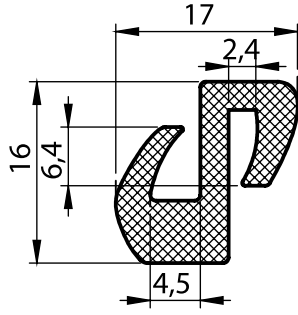


EPDM	A (mm)	B (mm)	Material
6940 - 100	5,5	4,5	EPDM
6940 - 120	7	6	EPDM
6940 - 130	9,5	7,5	EPDM
6941 - 100	9,5	7,5	PVC

Item Number	A	B	C	D	E	F
6908 - 100	2,5	1,5	7	16	7	7
6909 - 100	2,5	3	7	17,9	10,5	11,5
6910 - 100	2,5	4,5	7	17,8	10,5	11,5
6942 - 100	3	1	4	11,6	4,5	6
6943 - 100	3	2	4	10,2	3	3
6944 - 100	4	1,5	4	13,6	5	6
6945 - 100	4	1,5	7	16	7	7
6946 - 100	4	2	7,3	18	11	8,7
6947 - 100	4	3	4	12,6	5	6
6948 - 100	4	3	7	16	7	7
6949 - 100	4	3	7	14	7	7
6950 - 100	4	3	7,5	19,5	12,5	9,5
6951 - 100	4,5	5	7	16	7	7
6952 - 100	5	2	5	15	6	6
6953 - 100	5	2	7,5	19	12,5	9,5
6954 - 100	5	3	7	19	8	8
6955 - 100	5	3	7,5	19	12,5	9,5
6956 - 100	5	5	7	18,4	9	8
6957 - 100	5,5	2	7,3	19	11	8,7
6958 - 100	5,5	3,5	6	19	10	10
6959 - 1000	6	1,5	7,5	19	12,5	9,5
6960 - 100	6	2,5	7	19	8	8
6961 - 100	6	3	7,5	19	12,5	9,5
6962 - 100	6	4	7,5	19	12,5	9,5
6963 - 100	6	6	8,5	19	9,5	9
6964 - 100	7	3	7	20,5	12	8,5
6965 - 100	8	3	7,5	22	12,5	9,5
6966 - 100	8	4	8,5	25	12,5	10
6967 - 100	10	3	7,5	23	12,5	9,5
6968 - 100	10	6	7,5	24	12,5	9,5
6969 - 100	14	4	11	29	11	12

6939 - Window Rubber Profile

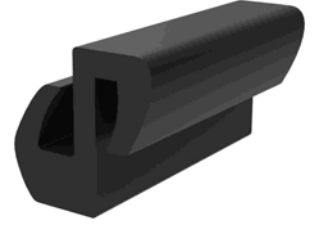
Item Number 6939 - 100



Material

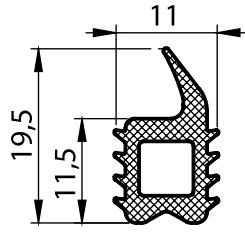
Epdm
Steel spring core
For 0,5-1,5 mm thickness

6939 Window Rubber Profile



6983 - Door Profile

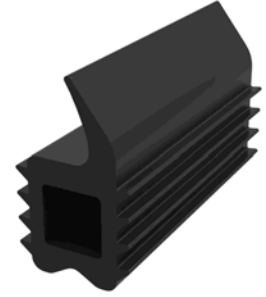
Item Number 6983 - 100



Material

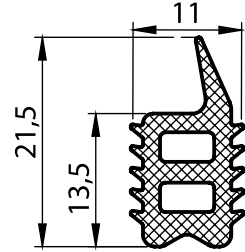
PVC

6983 Door Profile



6984 - Door Profile

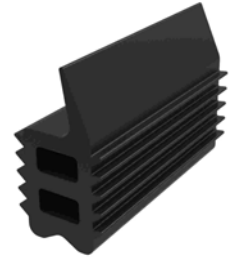
Ürün Kodu 6984 - 100



Material

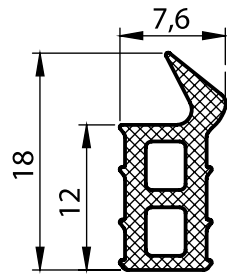
PVC

6984 Door Profile



6985 - Door Profile

Ürün Kodu 6985 - 100



Material

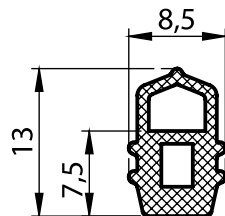
PVC

6985 Door Profile



6986 -Door Profile

Ürün Kodu 6986 - 100

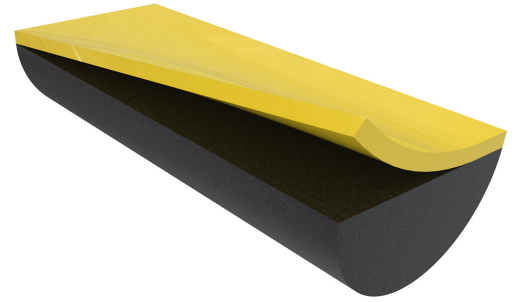
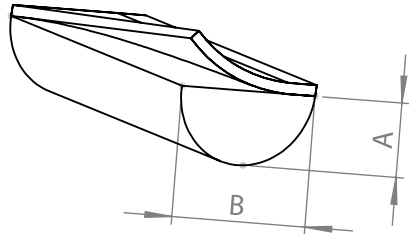


Material

PVC

6986 Door Profile





Gaskets

6301 - Self Adhesive Liquid Gasket

A	B	Item Number
3	10	6310 - 400
3	15	6315 - 400
3	20	6320 - 400
4	10	6410 - 400
4	15	6415 - 400
4	20	6420 - 400
5	10	6510 - 400
5	15	6515 - 400
5	20	6520 - 400
6	10	6610 - 400
6	15	6615 - 400
6	20	6620 - 400
7	10	6710 - 400
7	15	6715 - 400
7	25	6725 - 400
8	10	6810 - 400
8	15	6815 - 400
8	20	6820 - 400
9	15	6915 - 400
9	20	6920 - 400
10	15	6999 - 1015
10	20	6999 - 1020

Material

Polyurethan