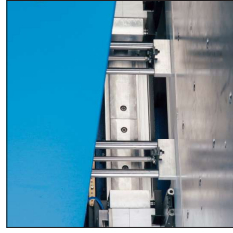


a



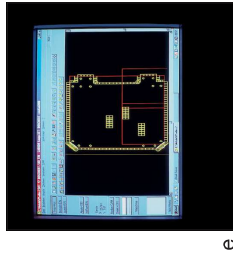
b



c



d



e



f



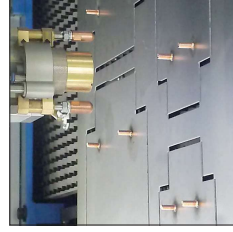
g



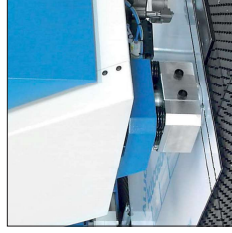
h

Optional components of the COMPACT

- a The automatic tool lubrication serves to increase tool life when nibbling stainless steel (VA) and decreases edge burrs in aluminium
- b Repositioning up to 10 meters and clamp movement without contacting the sheet, 2 robust clamps for sheets up to 200 kg (expandable to 4 clamps), Standard capacity up to 7 mm or 12,7 mm when required (Standard)
- c Sandblasted, corrosion resistant surface as standard, Balls in the table for heavier sheets and easy handling, brushes in the table for thin or scratch sensitive sheets are also available
- d Vacuum slug removal
- e BG-CUT CNC/CAD software to import DXF-files into machine language, calculates punch time, graphic simulation
- f Nibbling up to 800 strokes / min with integrated oil cooling
- g Programmable repositioning of the clamps for faster set up of the machine (Standard)
- h Tapping and drilling attachment for threads M3 up to M12 and smaller drilled holes in thicker sheets
- i Marking apparatus for marking parts in 10 different fonts
- j Stud welding
- k Composite material milling



i

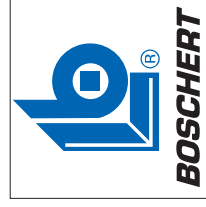


k



COMPACT

- Punching
- Nibbling
- Forming
- Marking
- Tapping



BOSCHERT

simply better!



BOSCHERT
GmbH+Co.KG
Mattenstraße 1
79541 Lörrach, Germany
Telephone : +49 7621 9593-0
Telefax: +49 7621 55184
www.boschert.de
info@boschert.de



COMPACT

The COMPACT punching machine from **BOSCHERT** is the perfect machine for the first-time user of CNC punching technology.

Advantages:
 user-friendly graphic programming, high quality with low cost, small floor space requirement.

Heavy duty C-frame construction allows working of oversized sheets, by using turning and automatic repositioning function.



COMPACT Rotation Index

Stepless 360 degree rotation of all tools up to 105 mm diameter using brushless DC motors and pneumatic indexing of Revotools.

The 7-way Revotool was especially constructed for this model.

In addition to 6 tools with a diameter of 16 mm each, with a slitting tool of 5 x 30 mm it is possible to punch nearly every contour, allowing complete processing of the sheet without changing tools.

Tooling



Quick change tool cassettes hold the punch, die and stripper and are set off-line so as not to limit machine run time.

Trumpf® standard tooling

- easy handling
- low cost
- long tool life
- long regrind length



punch



adjustment rings

Pu stripper



die size 1

Revotools



4-station up to max. Ø 25mm

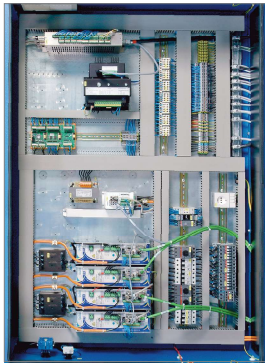


6-station up to max. Ø 20mm



8-station up to max. Ø 16mm

Electrical cabinet



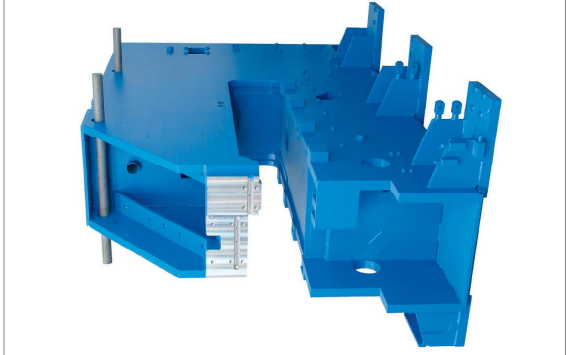
Open and easily surveyed panel includes digital control, cooling fan, transformers and control.

Industrial CPU



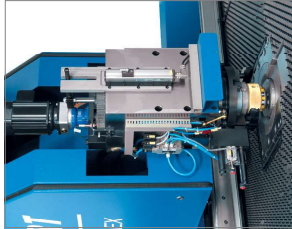
Control with internal memory, USB port and LAN RJ 45 for network connection. Possible remote maintenance by internet.

Frame

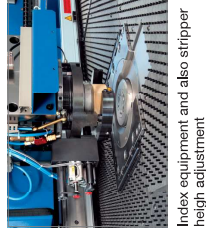


Solid welded steel construction guarantees the highest stability for punching sheets up to 12,7 mm thickness.

Punching head rotation



Solid construction with DC motor and measuring system



Index equipment and also stripper height adjustment

Technical Data

Working area	
Compact 500 x 1000 (2000)	560 x 1060 mm (2080)
Compact 750 x 2000	810 x 2080 mm
Compact 1000 x 2000	1060 x 2080 mm
Compact 1250 x 2000 (2500)	1310 x 2080 mm (2580)
Compact 1500 x 2000 (3000)	1560 x 2080 mm (3080)
Performance	
Max. sheet thickness	12,7 mm damp opening / Revotool 6 mm ¹
Max. sheet length	9999 mm by repositioning
Max. hydraulic punching power	280 kN (optional 400 kN)
Max. workpiece weight	200 kg
Speeds	
Max. positioning speed X- axes	80 m/min
Max. positioning speed Y- axes simultaneous X & Y	80 m/min
Max. strokes standard hydraulic	85 m/min
Max. strokes fast hydraulic	250 strokes/min
Max. strokes fast HBL hydraulic	400 strokes/min
Toolings	
Trumpf® tooling system	105 mm or any shape within 105 mm
Max. punching diameter	4 / 6 / 7 / 8 stations
Revotool	2-4 sec. Revotool
Time of tool changing	15 sec. manual
Axes accuracy during punching process	
Positioning difference	+/- 0,10 mm
Repeatability	+/- 0,03 mm
Space requirement and weights²	
Compact 500 x 1000 (2000)	B (X) T (Y) H 2900 (4000) x 2540 x 2100 mm 5800 (6000) kg
Compact 750 x 2000	4000 x 3165 x 2100 mm 7500 kg
Compact 1000 x 2000	4000 x 3790 x 2100 mm 9200 kg
Compact 1250 x 2000 (2500)	4000 (6860) x 4410 x 2100 mm 10800 (11000) kg
Compact 1500 x 2000 (3000)	4000 (6860) x 5058 x 2100 mm 14000 (15400) kg
Electrical Values standard hydr. / fast hydr.	
Hydraulic motor	Electrical connecting value 20 / 25 kVA 4,8 / 11 kW
Electrical consumption 2 mm sheet thickness continuous operation	4,9 / 7,7 kW/h
Electrical consumption 4 mm sheet thickness continuous operation	5,4 / 8,75 kW/h
Required fuse	3 x 25 A / 3 x 35 A
Pneumatic connecting value	min. 4 bar
Hydraulic oil	115 / 160 litre

¹ Mild steel S140mm²

² The exact values can be found in each specific installation plan

